

MAITLAND - TURNKEY READY SPORTS / GYM FACILITIES



PROPERTY DESCRIPTION

- ± 8,500 up to 20,000 SF
- 100% HVAC & insulated
- Excellent Maitland location
- Huge signage
- Same complex as other sports venues
- Attractive building exterior
- Clear height ± 22'+

SUITE DESCRIPTION

- Zoning allows for critical Assembly Use
- On-site parking
- Immaculate buildout
- Complete with locker rooms & showers
- Clearspan / Column-free
- Washer / Dryer hookups
- Fully fire sprinkled

OFFERING SUMMARY

Lease Rate:	NEGOTIABLE
Building Size:	8,500 - 20,000 SF

DEMOGRAPHICS	1 MILE	3 MILES	5 MILES
Total Households	3,998	34,194	94,880
Total Population	9,878	85,436	235,626
Average HH Income	\$69,210	\$80,205	\$74,222

Heidi P. Zerivitz
 President
 407.929.5797
 heidi@citycommercial.com

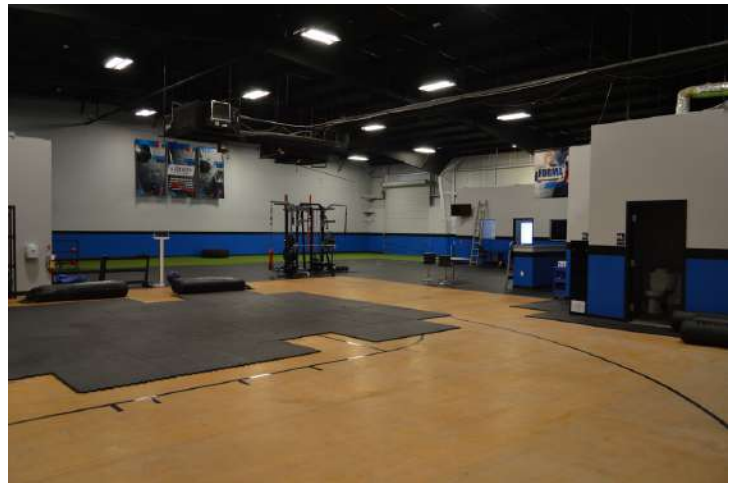
CITY COMMERCIAL
 1101 Symonds Ave.
 Winter Park, FL 32789
 CITYcommercial.com



FOR LEASE

143 ATLANTIC DRIVE | MAITLAND, FL 32751

Photos



Heidi P. Zerivitz
President
407.929.5797
heidi@citycommercial.com

CITY COMMERCIAL
1101 Symonds Ave.
Winter Park, FL 32789
CITYcommercial.com



FOR LEASE

143 ATLANTIC DRIVE | MAITLAND, FL 32751

Photos



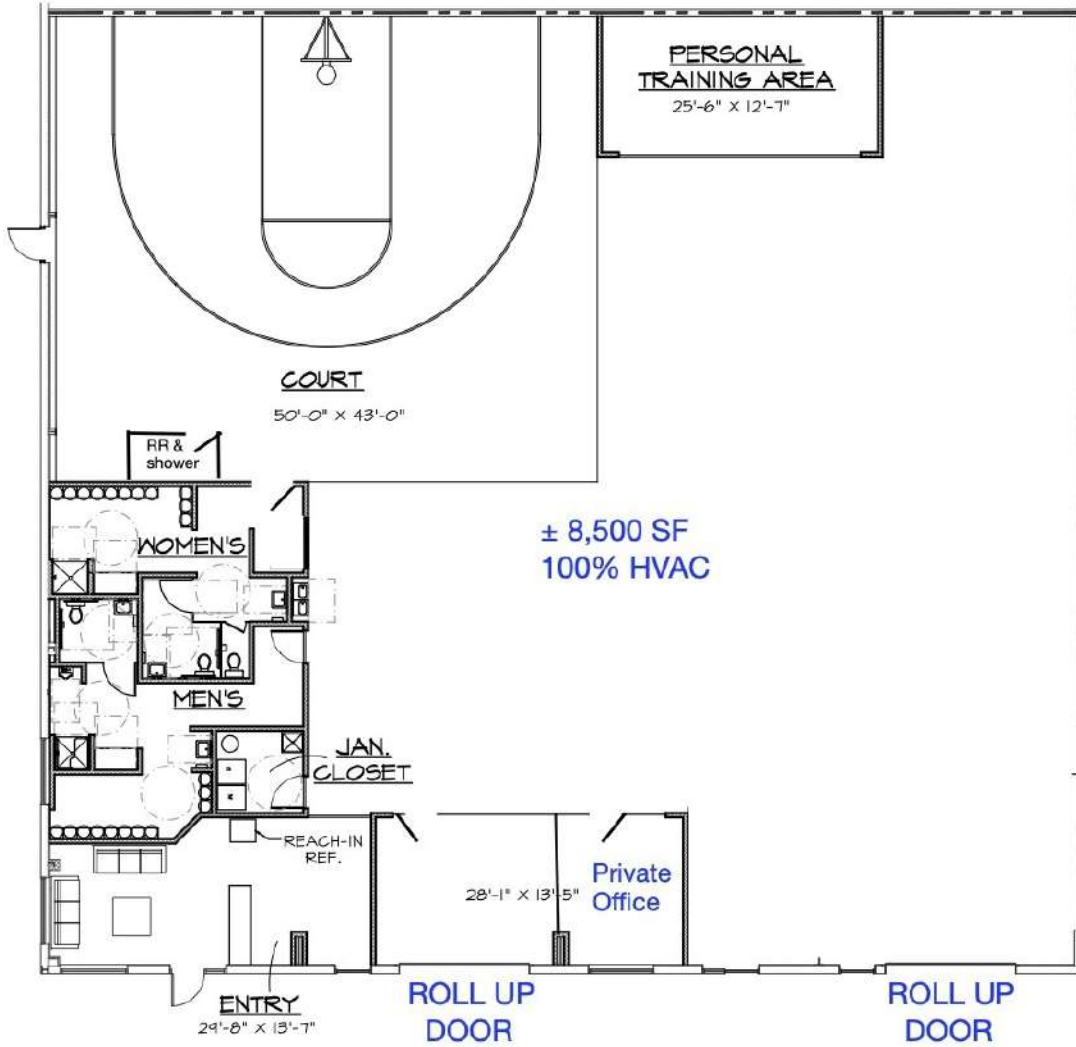
Heidi P. Zerivitz
President
407.929.5797
heidi@citycommercial.com

Heidi P. Zerivitz
President
407.929.5797
heidi@citycommercial.com

CITY COMMERCIAL
1101 Symonds Ave.
Winter Park, FL 32789
CITYcommercial.com



Space Plan



Measurements are subject to errors and omissions



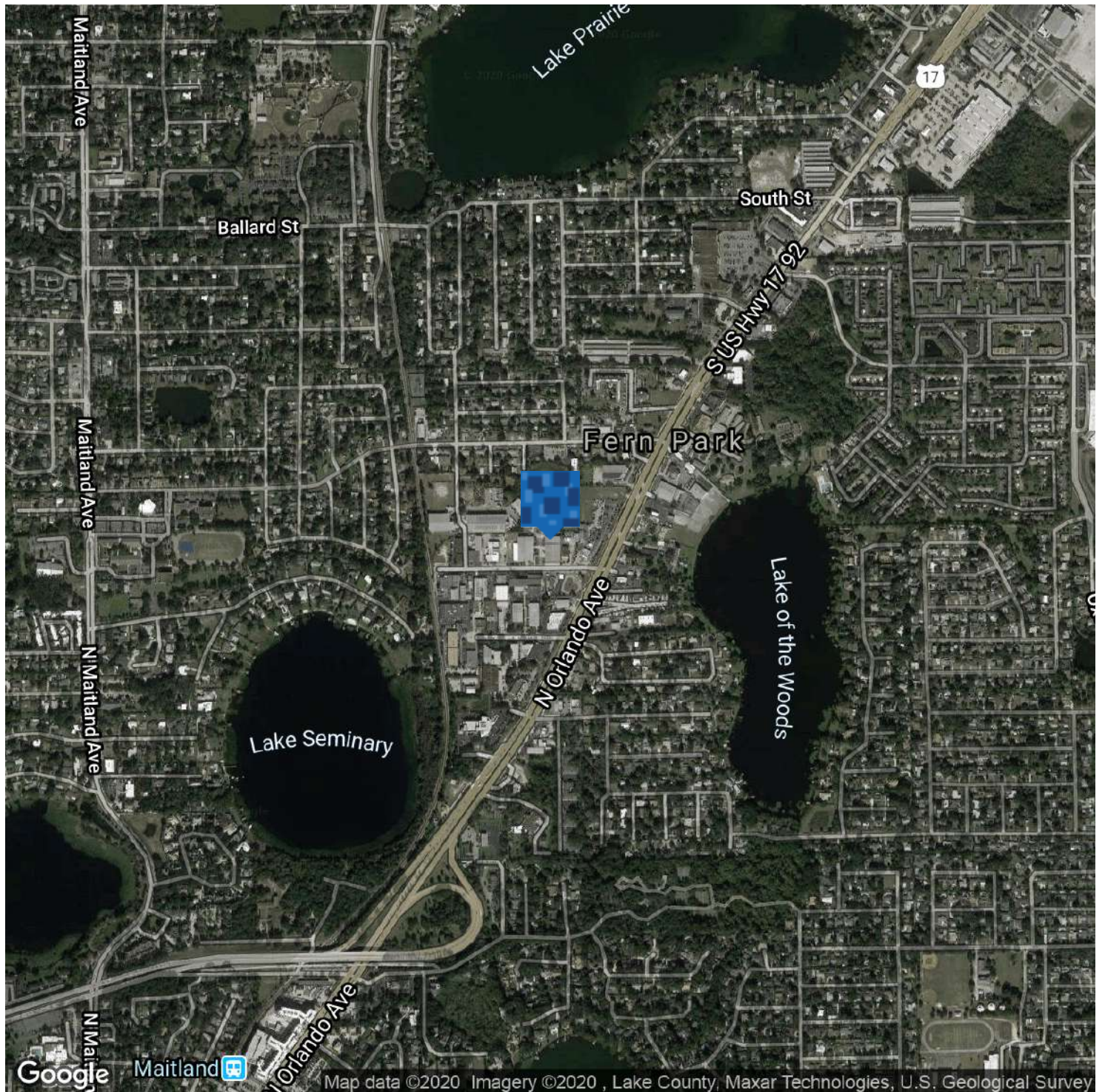
FLOOR PLAN

Heidi P. Zerivitz
President
407.929.5797
heidi@citycommercial.com

CITY COMMERCIAL
1101 Symonds Ave.
Winter Park, FL 32789
CITYcommercial.com



Location Map



Heidi P. Zerivitz
President
407.929.5797
heidi@citycommercial.com

CITY COMMERCIAL
1101 Symonds Ave.
Winter Park, FL 32789
CITYcommercial.com

