



CITY COMMERCIAL

FOR SALE OR LEASE: DENTAL / MEDICAL / OFFICE
1311 W. Webster Ave.
Winter Park, FL 32789



Lee Zerivitz, SIOR, CCIM
Managing Partner
Office: 407.644.CITY (2489)
Cell: 407.929.3598

lee@citycommercial.com

CITY COMMERCIAL
1101 Symonds Avenue
Suite 600
Winter Park, FL 32789

www.CITYcommercial.com



Property Highlights

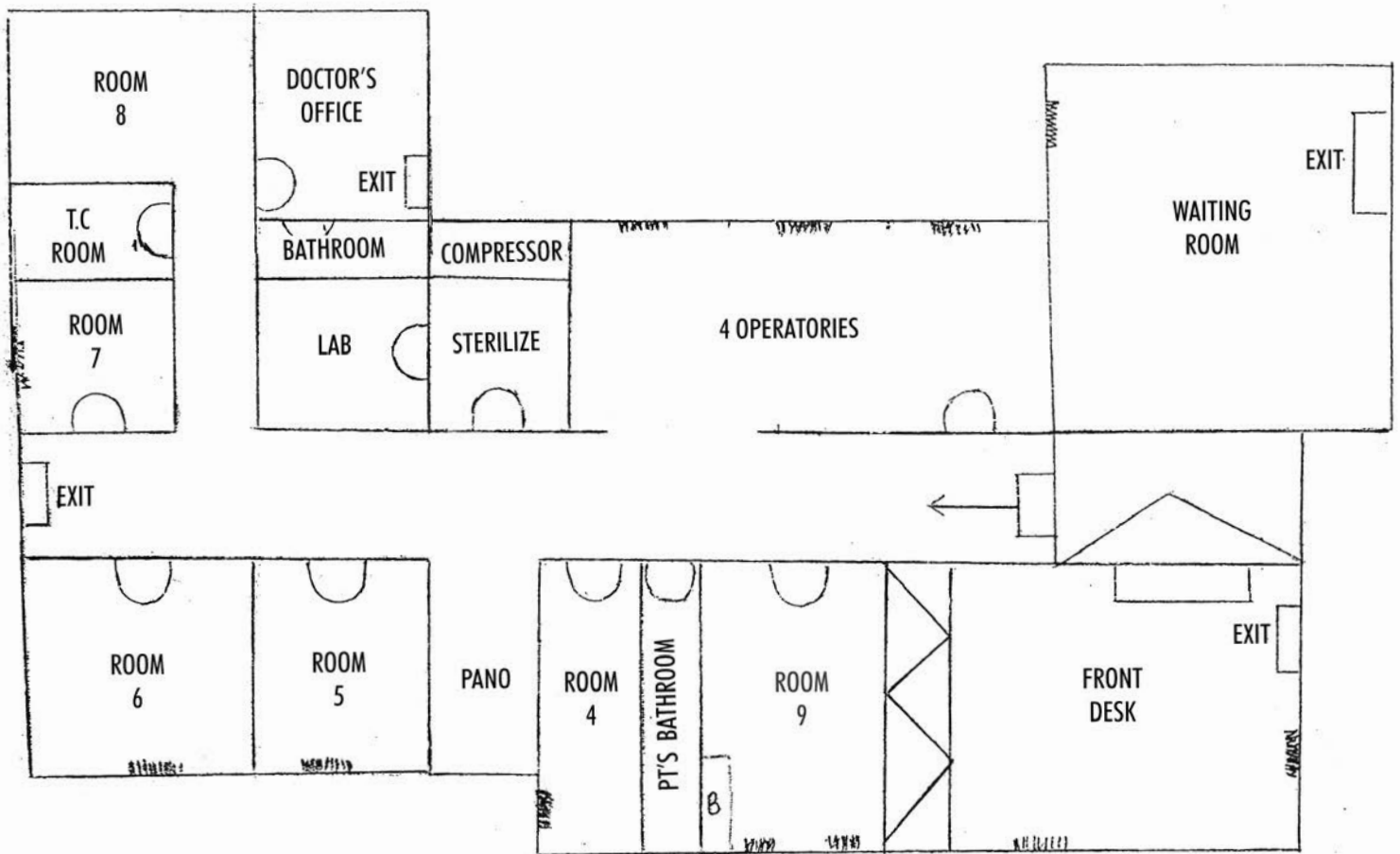
Summary

- First time ever for sale
- Rare Winter Park freestanding building
- Irreplaceable location adjacent to Center of Winter Park Plaza
- Decades long dental practice use
- Entry points from both Lee Rd and 17-92
- Zoning allows multiple uses

Features

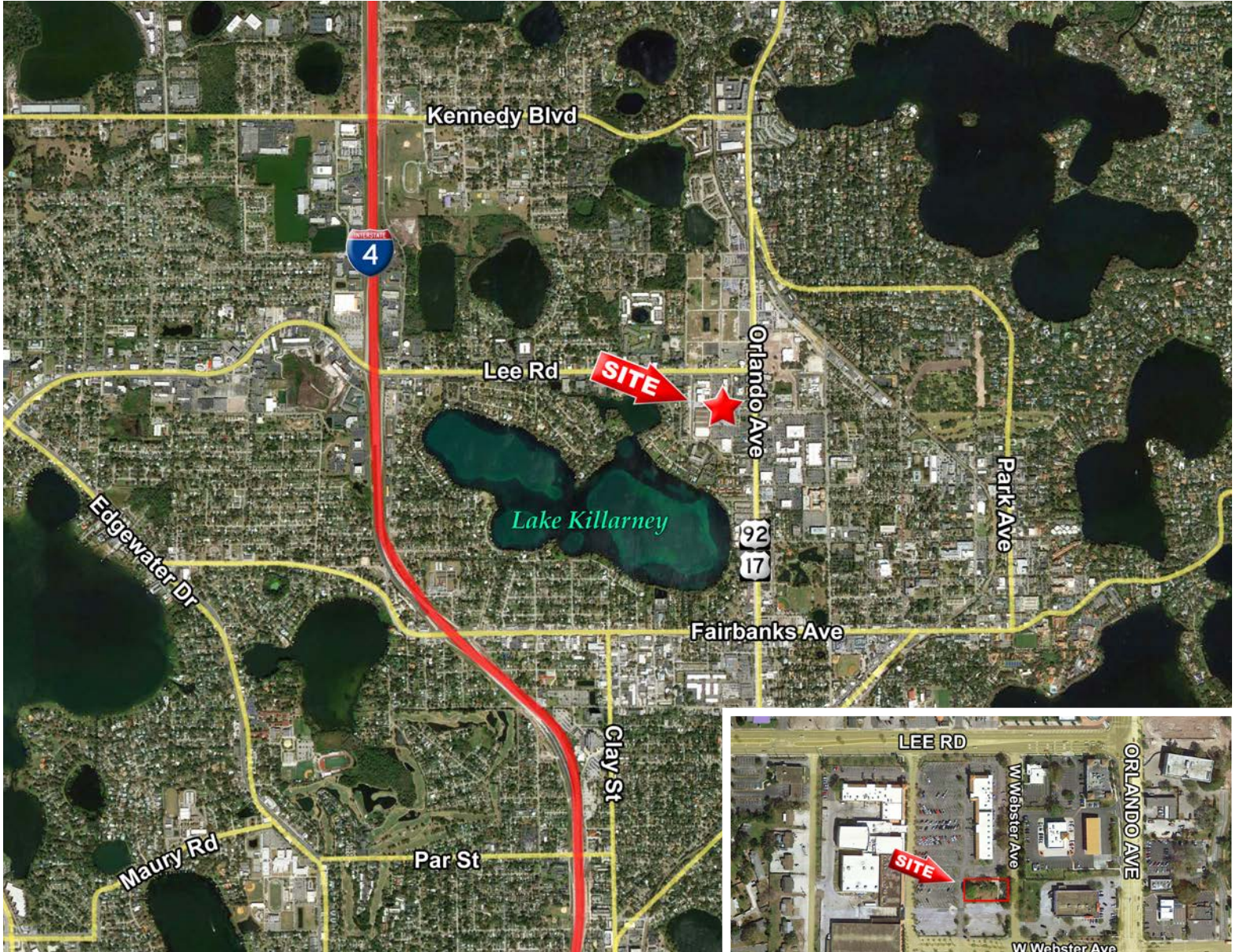
- ± 3,412 SF
- Recent renovations of new electric & plumbing
- New roof December 2017
- Nine in-place dental operatories
- Monument signage
- C-1 zoning - City of Winter Park
- City utilities
- Parcel ID: [01-22-29-5224-00-035](#)

Building Space Plan



1. Does not include upstairs staff break room and restroom
2. Subject to errors and omissions

Market Aerial



CITY Commercial is the agent of the Landlord or Seller of this property and will be paid by the Landlord or Seller. All information furnished with respect to the subject property has been obtained from sources deemed reliable. No representation as to accuracy thereof is made. This offering is subject to errors, omissions, prior sales or withdrawal without notice.

Lee Zerivitz, SIOR, CCIM
Managing Partner
Office: 407.644.CITY (2489)
Cell: 407.929.3598

CITY COMMERCIAL
1101 Symonds Avenue
Suite 600
Winter Park, FL 32789

lee@citycommercial.com

www.CITYcommercial.com