

FOR SALE OR LEASE:

1973 LONGWOOD LAKE MARY RD
LONGWOOD, FL 32750



SALE PRICE: \$645,000.00
\$11 NN (RE TAXES & INSURANCE)

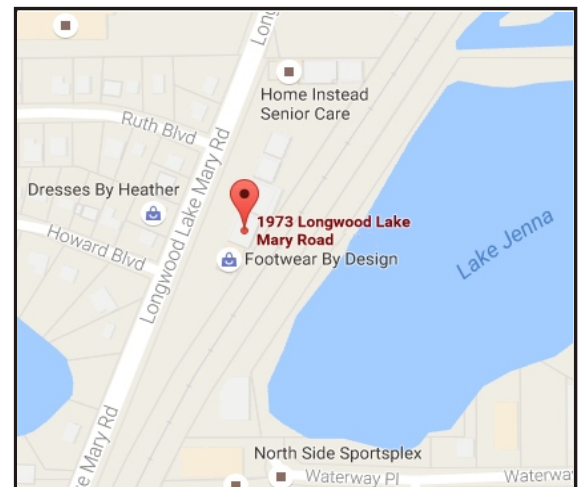


SUMMARY:

- ♦ ± 4,731 SF
- ♦ Free-standing YB 2005. Block construction
- ♦ Professional office building
- ♦ Lakewood Pointe Office Park
- ♦ Central to Longwood, Lake Mary, I-4, 417 & 434

FEATURES:

- ♦ Modern fit and finishes
- ♦ Highly functional layout
- ♦ Owner/user or can also be divided easily (3 entry points)
- ♦ FF&E available
- ♦ Ample parking



CITY COMMERCIAL

For further information, contact

Lee Zerivitz, CCIM

Office: 407.644.CITY (2489)

Cell: 407.929.3598

lee@citycommercial.com

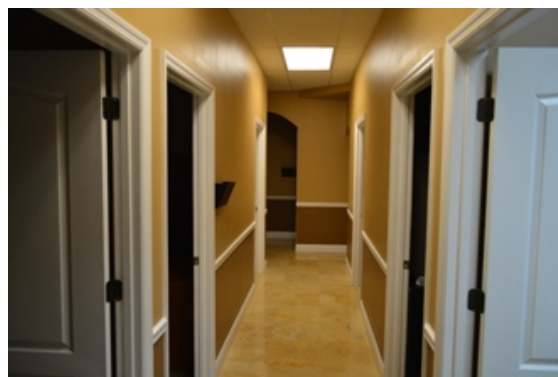
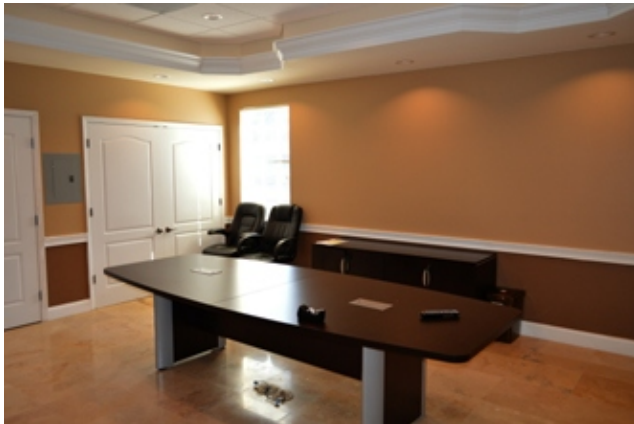
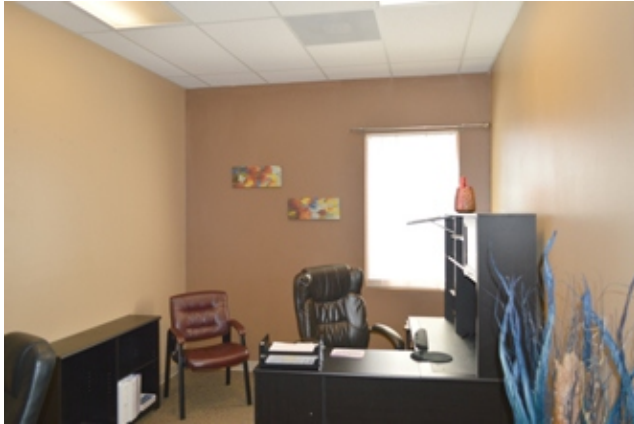
www.CITYcommercial.com

1071 W Morse Blvd., Ste. 101, Winter Park, FL 32789

CITY Commercial is the agent of the Landlord or Seller of this property and will be paid by the Landlord or Seller. All information furnished with respect to the subject property has been obtained from sources deemed reliable. No representation as to accuracy thereof is made. This offering is subject to errors, omissions, prior sales or withdrawal without notice.

**FOR SALE
OR LEASE:**

**1973 LONGWOOD LAKE MARY RD
LONGWOOD, FL 32750**



CITY COMMERCIAL

For further information, contact

Lee Zerivitz, CCIM

Office: 407.644.CITY (2489)

Cell: 407.929.3598

lee@citycommercial.com

www.CITYcommercial.com

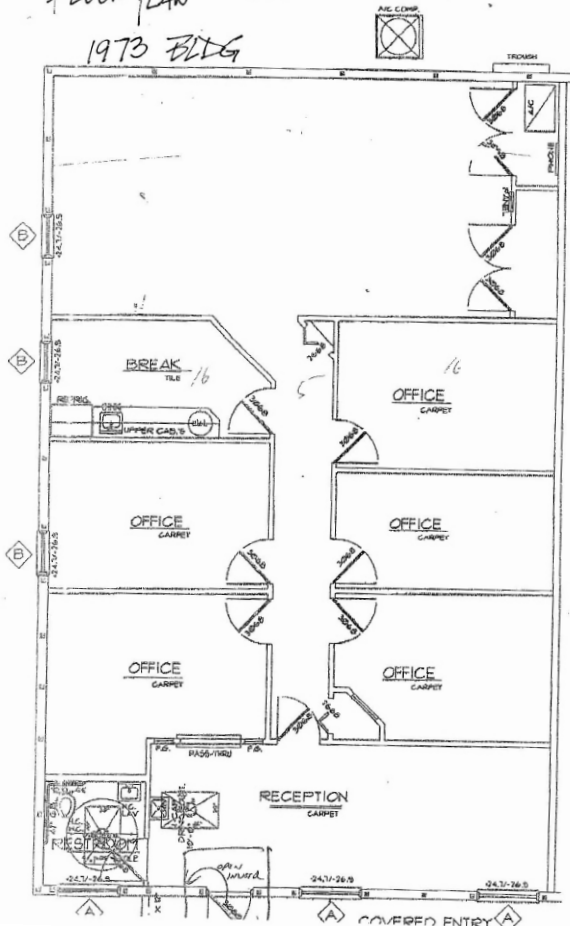
1071 W Morse Blvd., Ste. 101, Winter Park, FL 32789

CITY Commercial is the agent of the Landlord or Seller of this property and will be paid by the Landlord or Seller. All information furnished with respect to the subject property has been obtained from sources deemed reliable. No representation as to accuracy thereof is made. This offering is subject to errors, omissions, prior sales or withdrawal without notice.

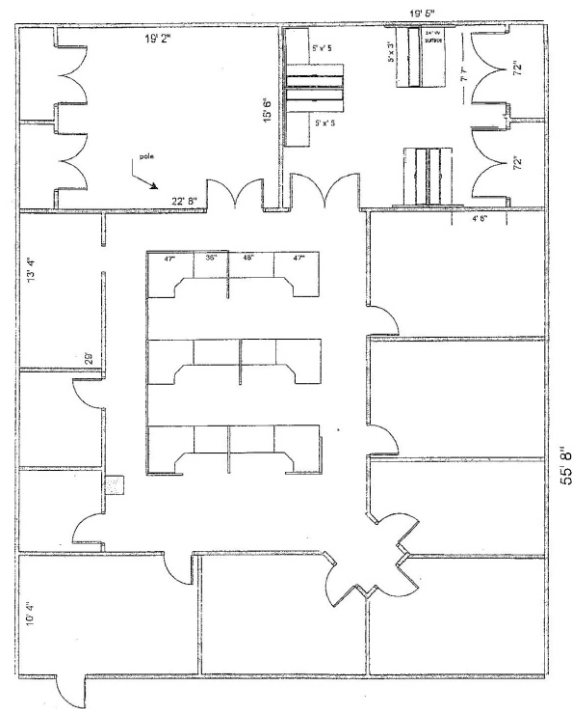
FOR SALE OR LEASE:

1973 LONGWOOD LAKE MARY RD
LONGWOOD, FL 32750

FLOOR PLAN SUITE # 1001
1973 BLDG



FLOOR PLAN SUITES # 1007 & 1015



CITY COMMERCIAL

For further information, contact

Lee Zerivitz, CCIM

Office: 407.644.CITY (2489)

Cell: 407.929.3598

lee@citycommercial.com

www.CITYcommercial.com

1071 W Morse Blvd., Ste. 101, Winter Park, FL 32789

CITY Commercial is the agent of the Landlord or Seller of this property and will be paid by the Landlord or Seller. All information furnished with respect to the subject property has been obtained from sources deemed reliable. No representation as to accuracy thereof is made. This offering is subject to errors, omissions, prior sales or withdrawal without notice.