

334 S. Wymore Rd. - Professional Office Building



PROPERTY DESCRIPTION

Suite B:
± 2,040 SF
City of Winter Park
9 exclusive parking spaces
New landscaping
Signage on Wymore Rd.

PROPERTY HIGHLIGHTS

- Excellent building condition
- Professional layout with reception area
- 4-5 private offices
- Conference room
- 2 person assistant workstation area
- Break room, copy/storage room and in-suite restroom
- Located at I-4 & Fairbanks

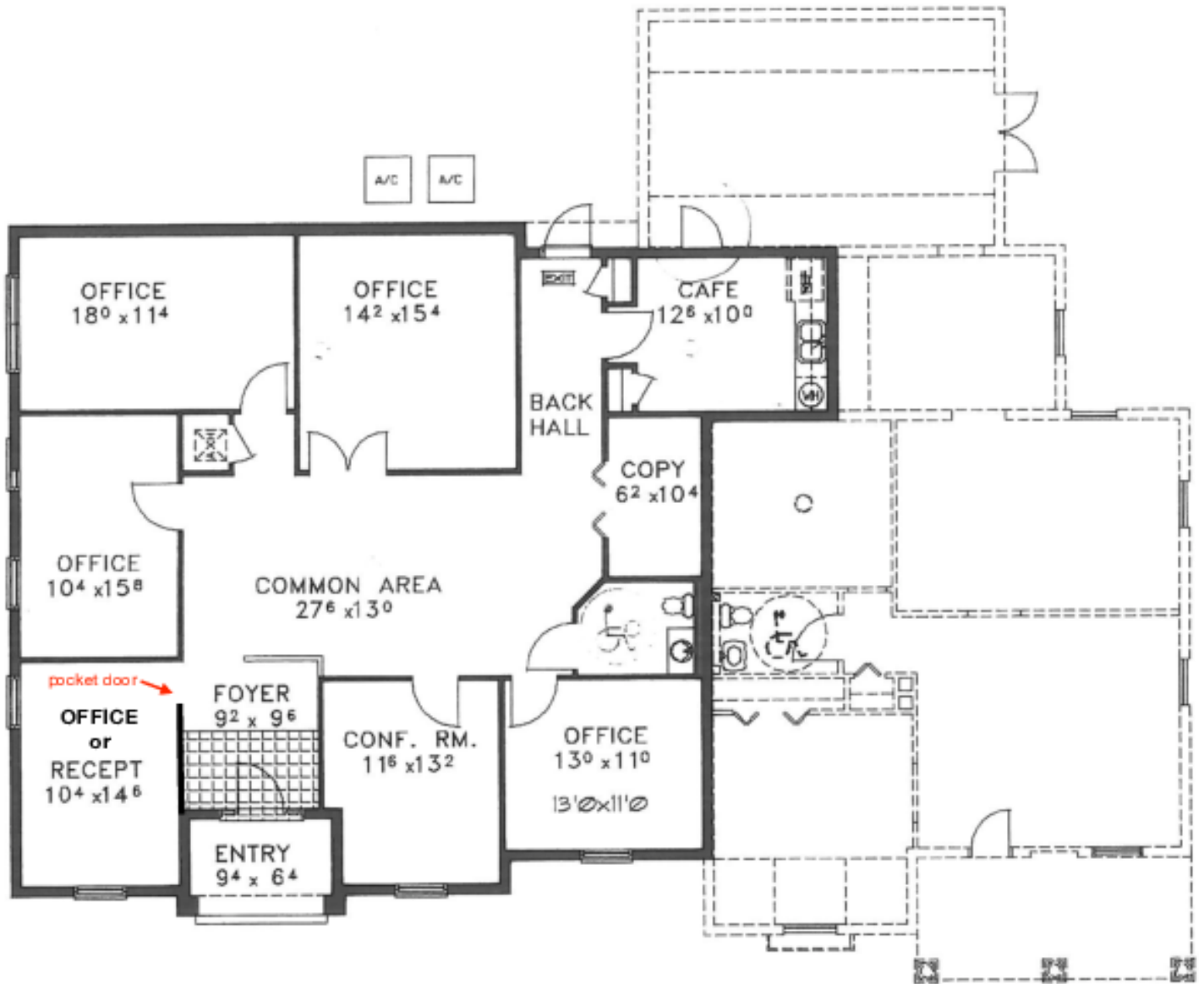


LEE ZERIVITZ, SIOR, CCIM
Managing Partner
407.644.CITY
lee@citycommercial.com

CITY COMMERCIAL
1101 Symonds Ave.
Winter Park, FL 32789
CITYcommercial.com



Space Plan



334 Wymore Road, Unit B

Additional Photos

