



CITY COMMERCIAL

**FOR LEASE: PRIME WINTER PARK INDUSTRIAL BUILDING
7200 Gardner Street
Winter Park, FL 32792**



Lee Zerivitz, SIOR, CCIM
Managing Partner
Office: 407.644.CITY (2489)
Cell: 407.929.3598

lee@citycommercial.com

CITY COMMERCIAL
1101 Symonds Avenue
Suite 600
Winter Park, FL 32789

www.CITYcommercial.com

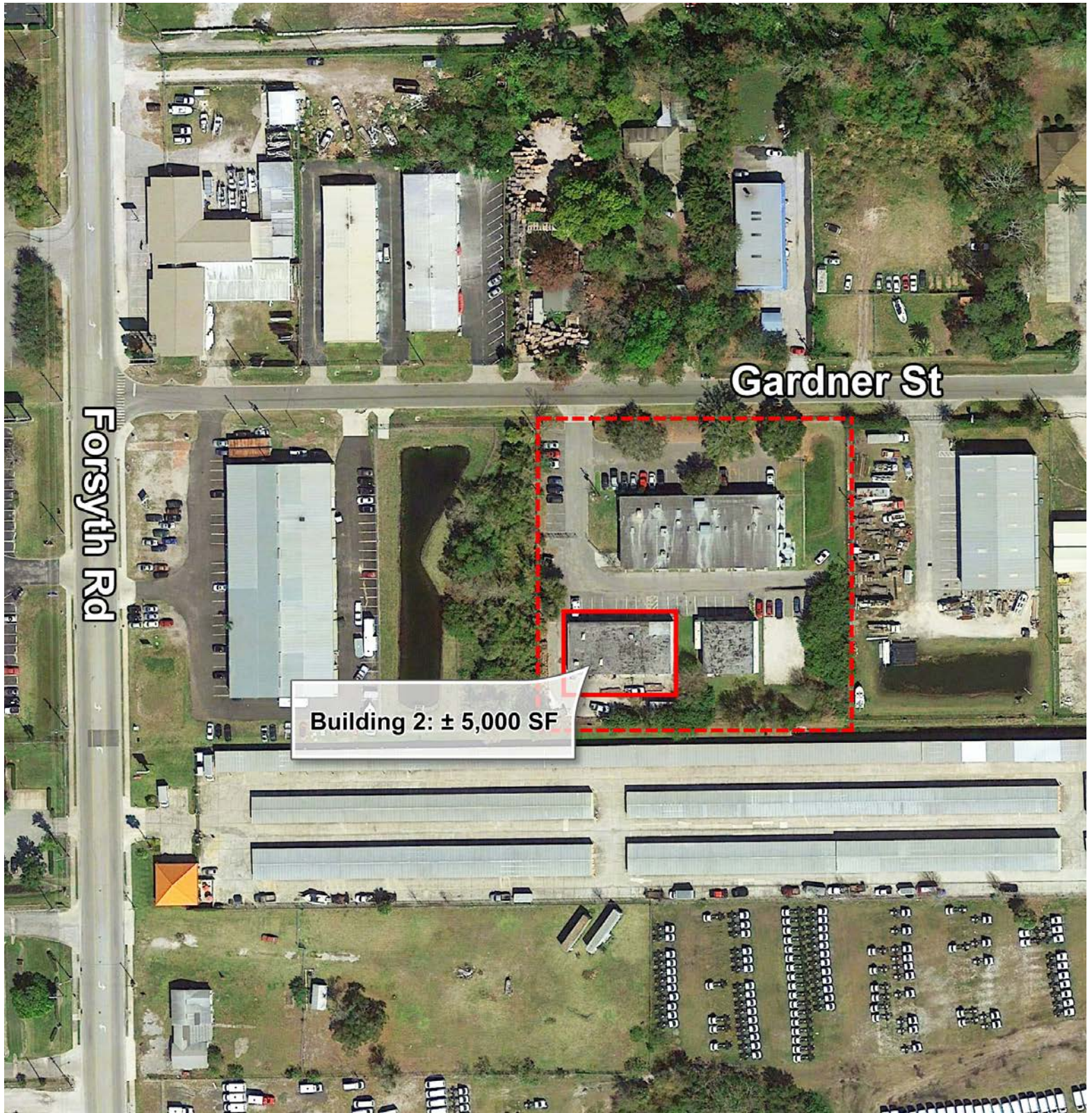


Property Highlights

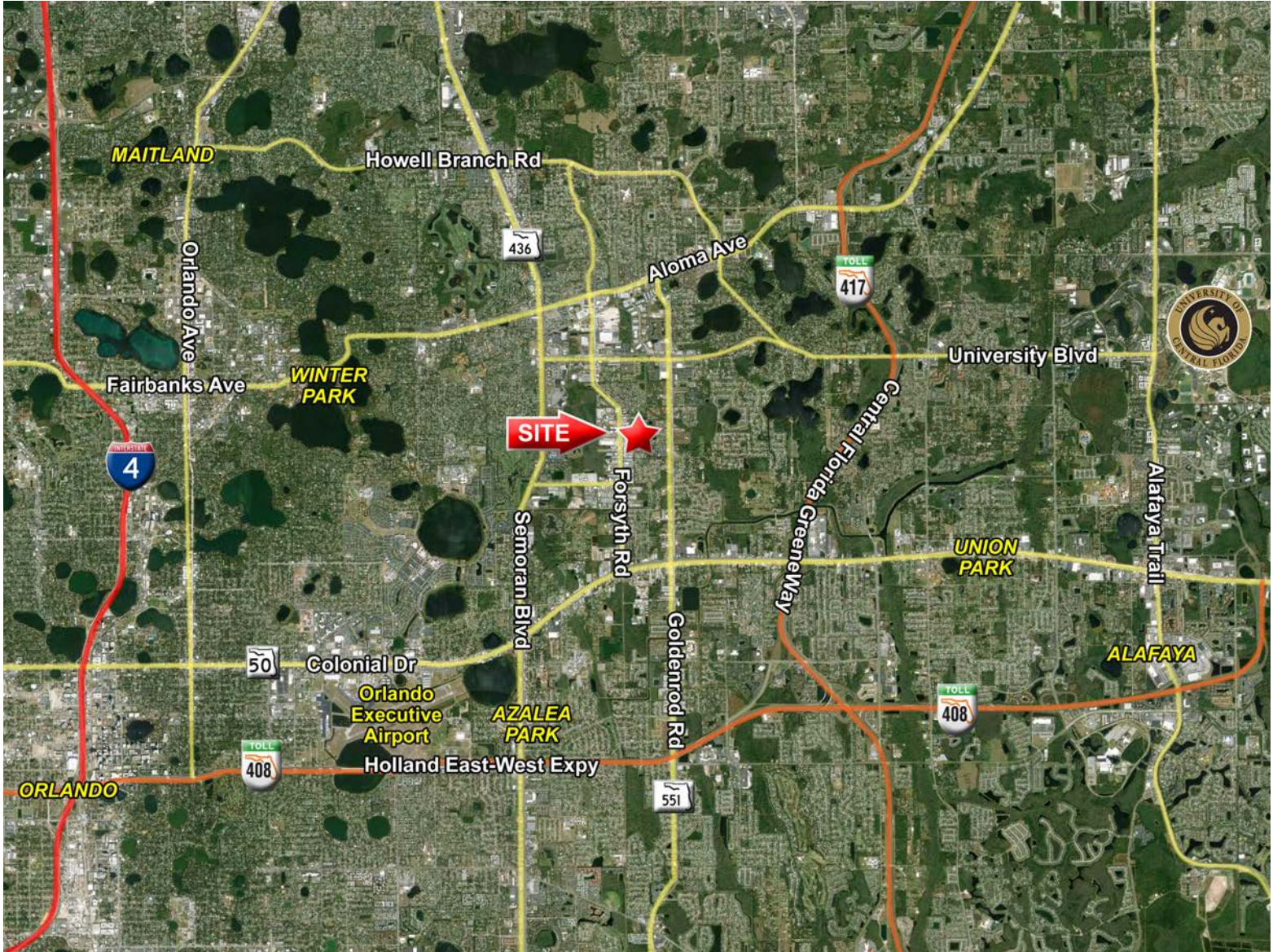
Building Highlights

- Industrial property comprising 3 individual buildings
- Highly desirable Winter Park address
- Freestanding Building #2 available for lease
- $\pm 5,000$ SF (50' x 100')
- Office space totals approx 1,500 SF
- Block construction
- Zoned I-1/I-5 Uninc Orange County
- $\pm 16'$ to deck with 3 roll-up doors
- Ample parking with fenced in yard

Building Detail Aerial



Market Aerial



CITY Commercial is the agent of the Landlord or Seller of this property and will be paid by the Landlord or Seller. All information furnished with respect to the subject property has been obtained from sources deemed reliable. No representation as to accuracy thereof is made. This offering is subject to errors, omissions, prior sales or withdrawal without notice.

Lee Zerivitz, SIOR, CCIM
Managing Partner
Office: 407.644.CITY (2489)
Cell: 407.929.3598

CITY COMMERCIAL
1101 Symonds Avenue
Suite 600
Winter Park, FL 32789

lee@citycommercial.com

www.CITYcommercial.com