

## CenterView Winter Park



### PROPERTY DESCRIPTION:

- Winter Park's Landmark 4-story office building
- Class A property has a refined mix of professional tenants

### PROPERTY HIGHLIGHTS:

- Prime WP corridor of high-end retail & restaurants
- Ease of access for clients directly off of I-4
- On-site banking with ATM
- Approx 65,000 cars/day at intersection
- Quick access to I-4 and major corridors

### SUITE DESCRIPTION:

Suite 301: ± 4,300 RSF

- Former tenant use - law firm. Well appointed.
- Double entry doors
- All offices are on windows with great natural light
- Extremely well-designed layout
- Above treetop views from the entire suite
- Beyond ample parking with reserved available
- Fiber in place - technical info available (cabling, # of present workstations, A/V setups, etc.)

**LEE ZERIVITZ, SIOR, CCIM**  
Managing Partner  
407.644.CITY  
lee@citycommercial.com

**CITY COMMERCIAL**  
1101 Symonds Ave.  
Winter Park, FL 32789  
CITYCommercial.com



**FOR LEASE**

631 S. ORLANDO AVE. | WINTER PARK, FL 32789

Office Photos



**LEE ZERIVITZ, SIOR, CCIM**  
Managing Partner  
407.644.CITY  
lee@citycommercial.com

**CITY COMMERCIAL**  
1101 Symonds Ave.  
Winter Park, FL 32789  
CITYCommercial.com



**FOR LEASE**

631 S. ORLANDO AVE. | WINTER PARK, FL 32789

Office Photos

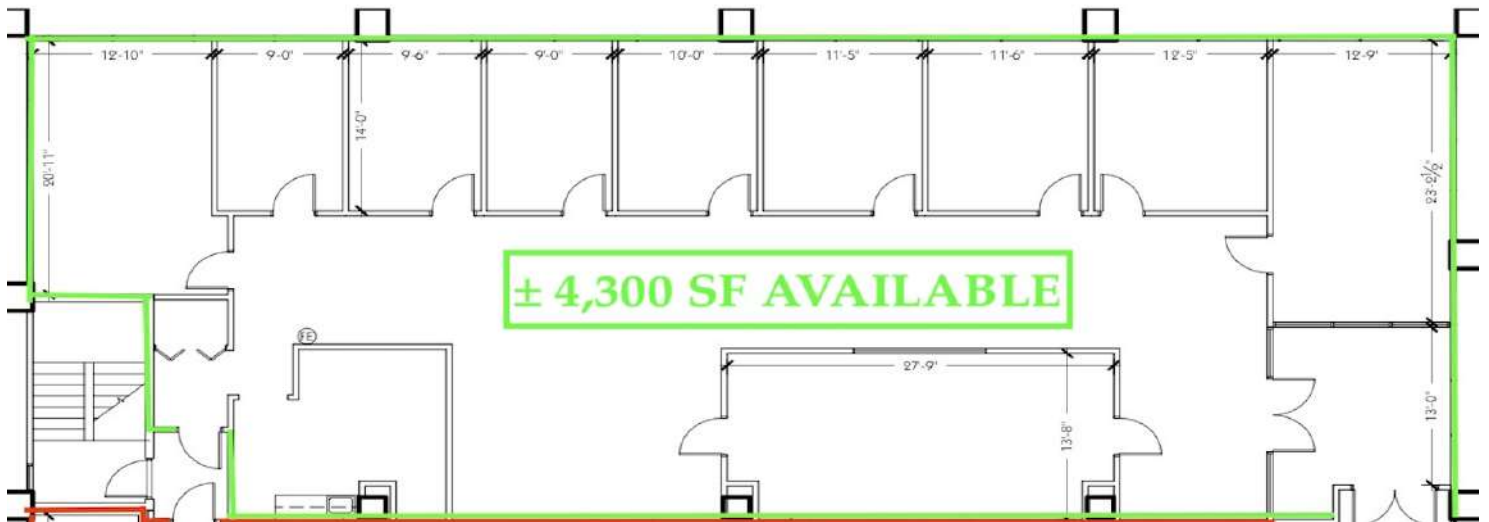


**LEE ZERIVITZ, SIOR, CCIM**  
Managing Partner  
407.644.CITY  
lee@citycommercial.com

**CITY COMMERCIAL**  
1101 Symonds Ave.  
Winter Park, FL 32789  
CITYCommercial.com

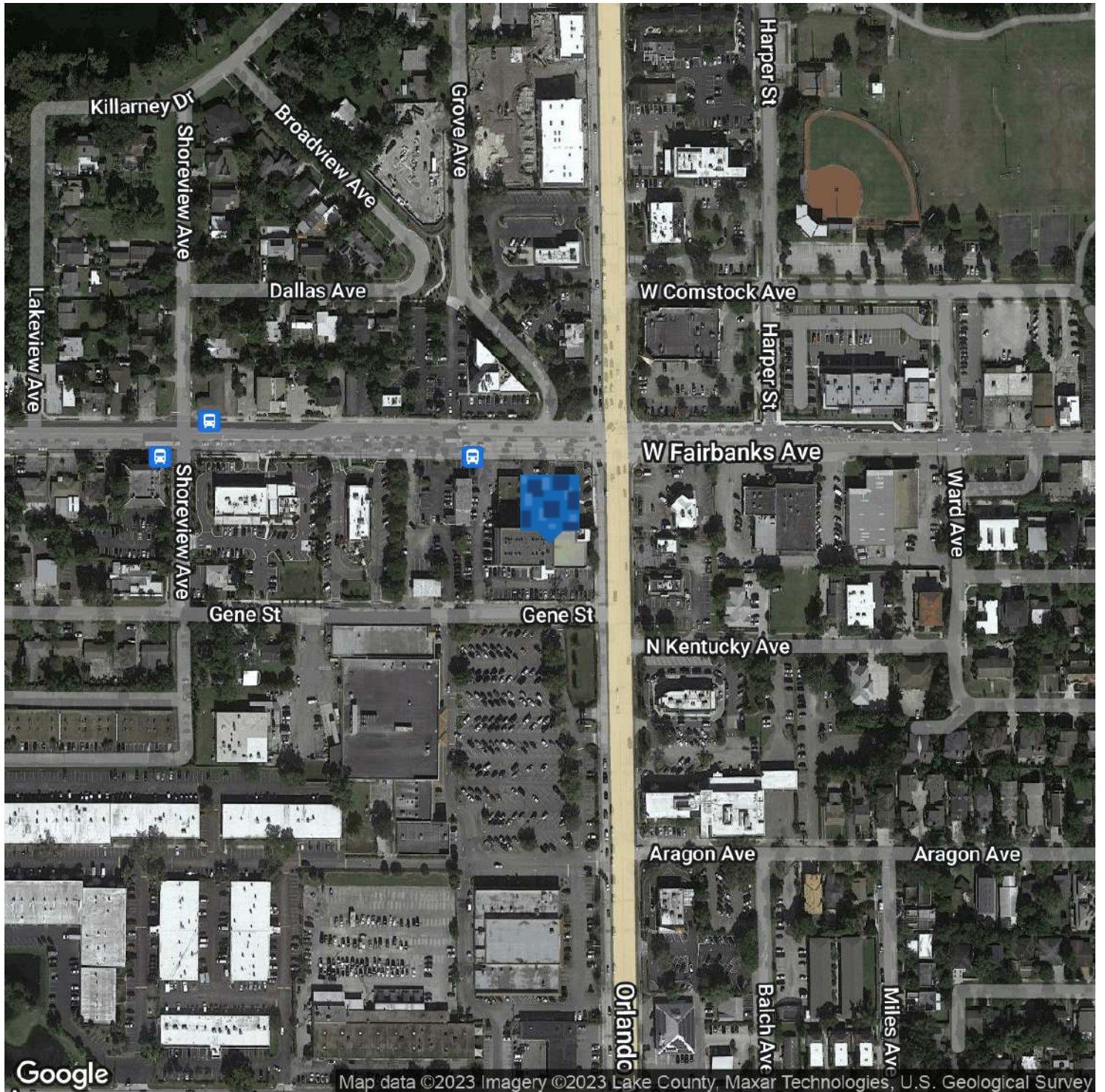


Suite 301 - Space Plan



**FOR LEASE**

**631 S. ORLANDO AVE. | WINTER PARK, FL 32789**



**LEE ZERIVITZ, SIOR, CCIM**  
Managing Partner  
407.644.CITY  
lee@citycommercial.com

**CITY COMMERCIAL**  
1101 Symonds Ave.  
Winter Park, FL 32789  
CITYCommercial.com



Nearby Restaurants & Retail

