



TURNKEY MEDICAL OFFICE CONDO

ORLANDO HEALTH MAIN CAMPUS

**FOR SALE OR LEASE**

## MEDICAL OFFICE CONDO

1118 S. ORANGE AVE., SUITE 202, ORLANDO, FL 32806



**LEE ZERIVITZ, SIOR, CCIM**  
Managing Partner  
Office: 407.644.CITY  
Cell: 407.929.3598  
lee@citycommercial.com

**CITY COMMERCIAL**  
1101 Symonds Ave.  
Suite 600  
Winter Park, FL 32789  
CITYcommercial.com

Detail Summary



Turnkey Medical Office Condo  
Sale or Lease

Adjacent to Orlando Health's  
Downtown Orlando Campus

Perfect for primary or satellite medical use

100% financing may be available  
Ask broker for details

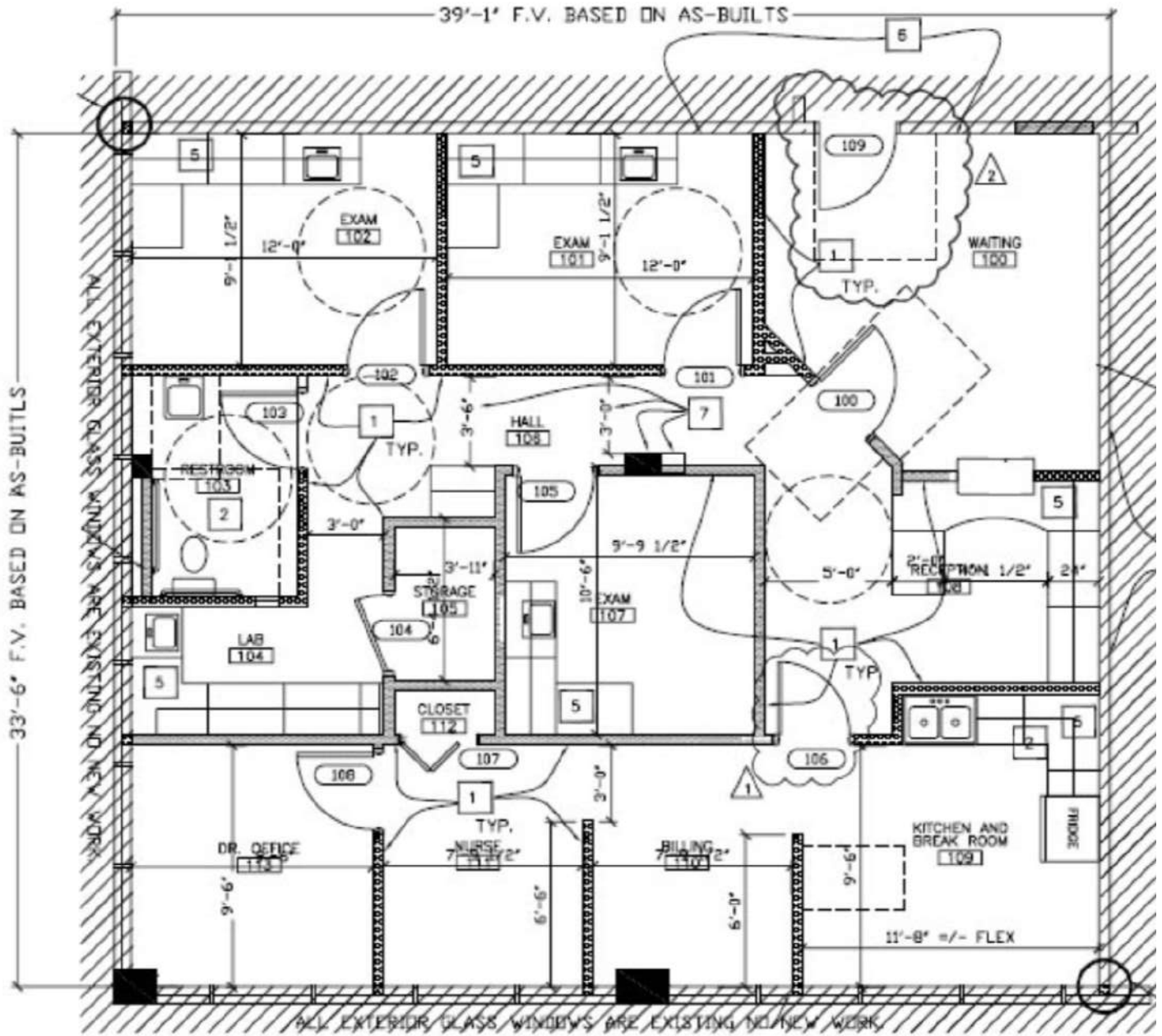
- Suite 202
- ± 1,330 SF
- Extremely efficient workflow pattern
- Reception, 3 exam rooms with sinks & private restroom
- Lab, break room and private physician office
- Granite tops and solid wood cabinetry
- 2 covered & reserved parking spaces
- Ample surface parking
- Marquee signage may be available

**LEE ZERIVITZ, SIOR, CCIM**  
Managing Partner  
407.644.CITY  
lee@citycommercial.com

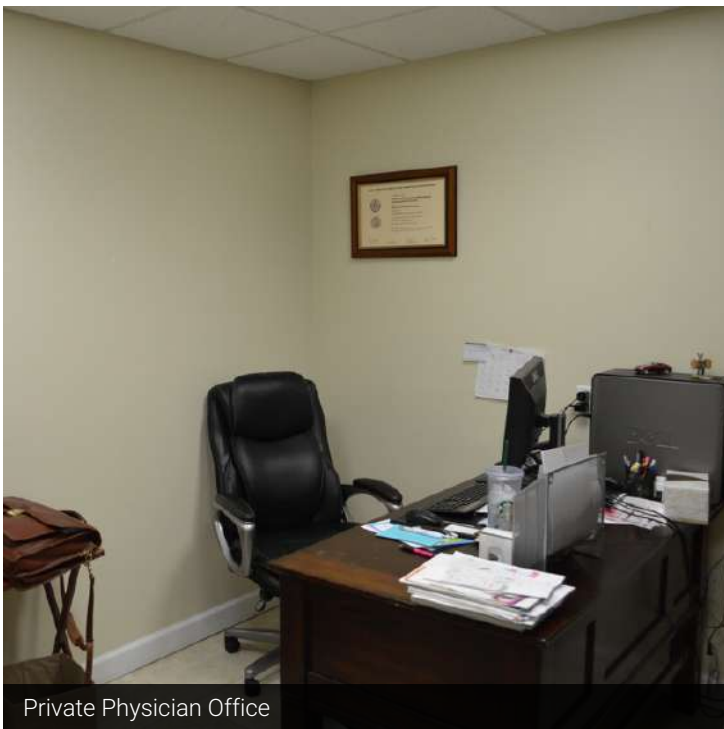
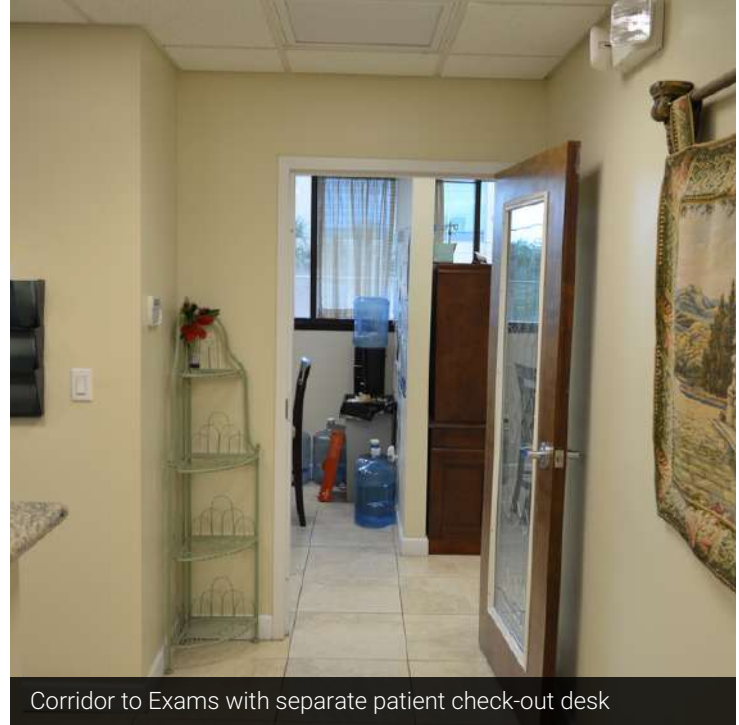
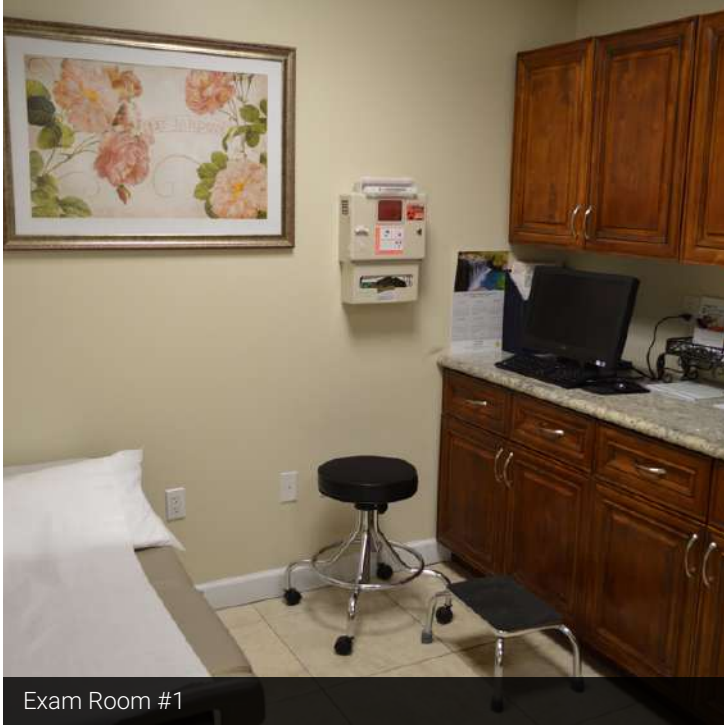
**CITY COMMERCIAL**  
1101 Symonds Ave.  
Winter Park, FL 32789  
CITYcommercial.com



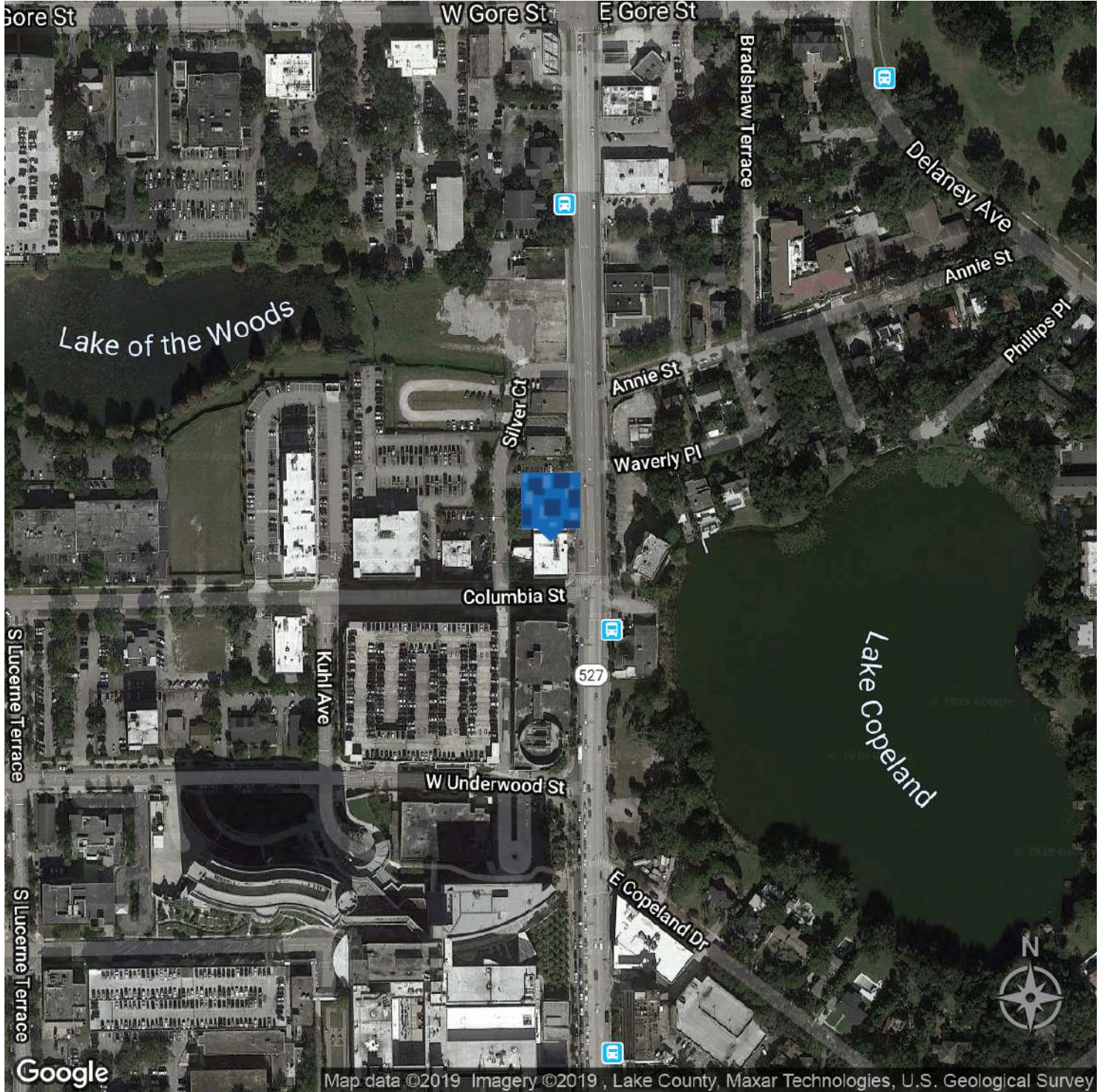
Space Plan



Additional Photos



Location Map



**LEE ZERIVITZ, SIOR, CCIM**  
Managing Partner  
407.644.CITY  
lee@citycommercial.com

**CITY COMMERCIAL**  
1101 Symonds Ave.  
Winter Park, FL 32789  
CITYcommercial.com

