

Downtown Orlando Warehouse/Office for Lease



OFFERING SUMMARY

Lease Rate:	Negotiable
Building Size:	21,327 RSF
Lot Size:	1.17 Acres
Zoning:	AC-2/T/PH

Available for purchase

PROPERTY OVERVIEW:

± 21,327 RSF @ signalized intersection of Central & Westmoreland
± 17,923 SF Warehouse & 3,404 SF Office
100% HVAC Warehouse

HIGHLIGHTS:

Warehouse:
± 17,923 SF
100% HVAC
14 - 20'+ clear height
Multiple roll up's & tractor-trailer loading dock
Counter sales area

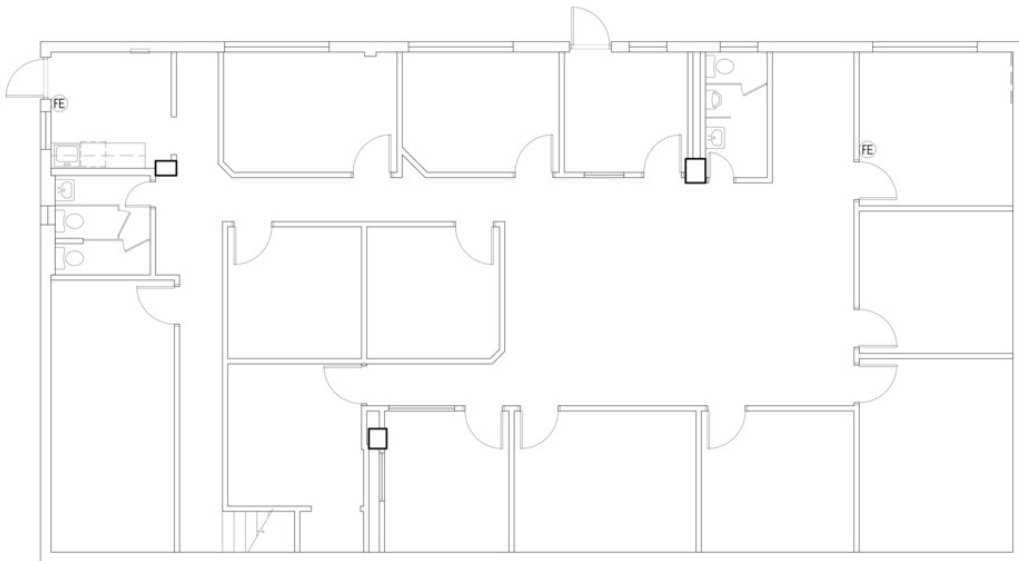
Offices:
± 3,404 SF
Separate admin building
Mix of private offices & cubicles

LEE ZERIVITZ, SIOR, CCIM
Managing Partner
407.644.CITY
lee@citycommercial.com

CITY COMMERCIAL
1101 Symonds Ave.
Winter Park, FL 32789
CITYcommercial.com



Warehouse & Office Space Plans



FOR LEASE

17 SOUTH WESTMORELAND DRIVE | ORLANDO, FL 32805



LEE ZERIVITZ, SIOR, CCIM
Managing Partner
407.644.CITY
lee@citycommercial.com

CITY COMMERCIAL
1101 Symonds Ave.
Winter Park, FL 32789
CITYcommercial.com



FOR LEASE

17 SOUTH WESTMORELAND DRIVE | ORLANDO, FL 32805

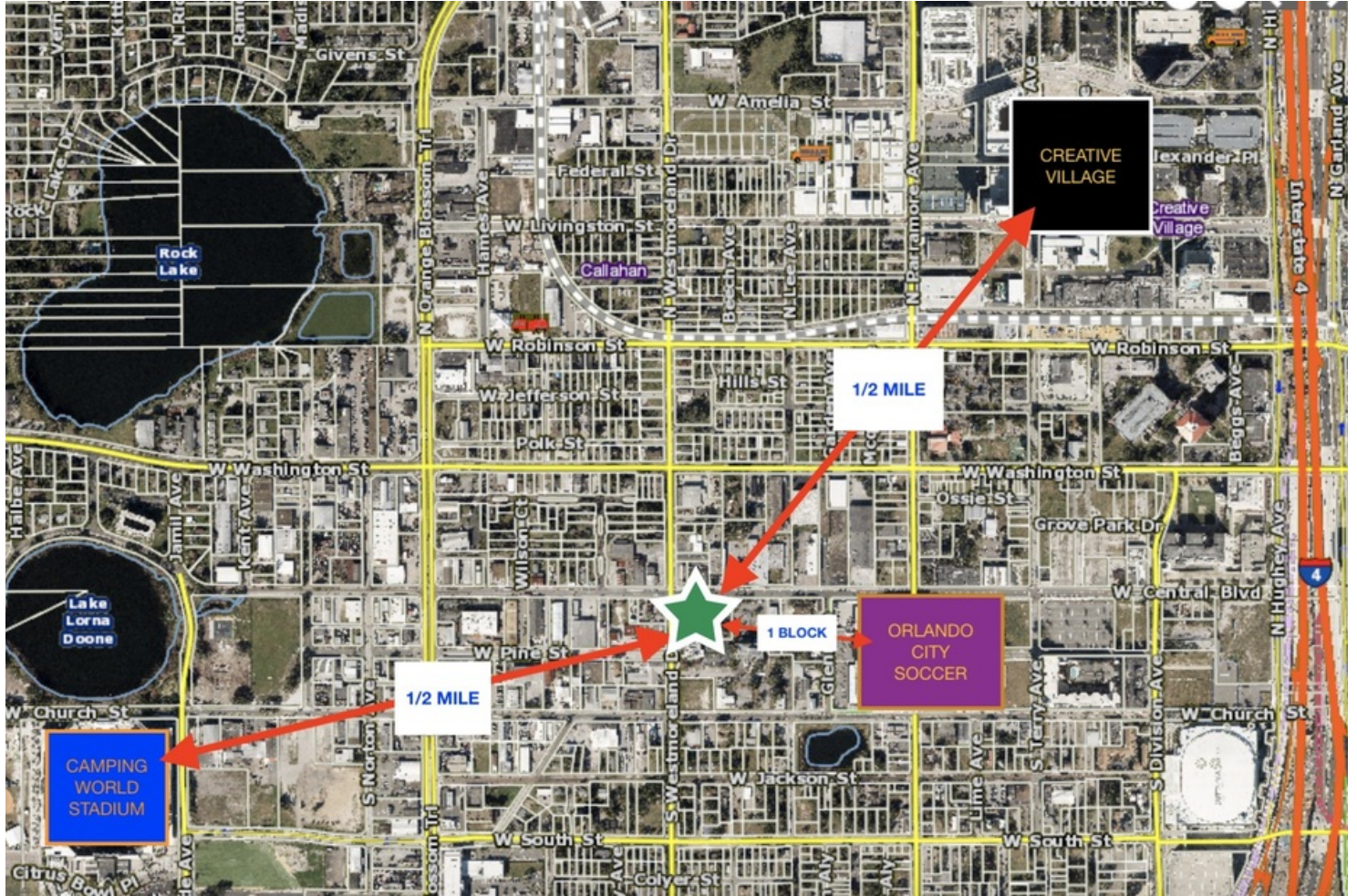


LEE ZERIVITZ, SIOR, CCIM
Managing Partner
407.644.CITY
lee@citycommercial.com

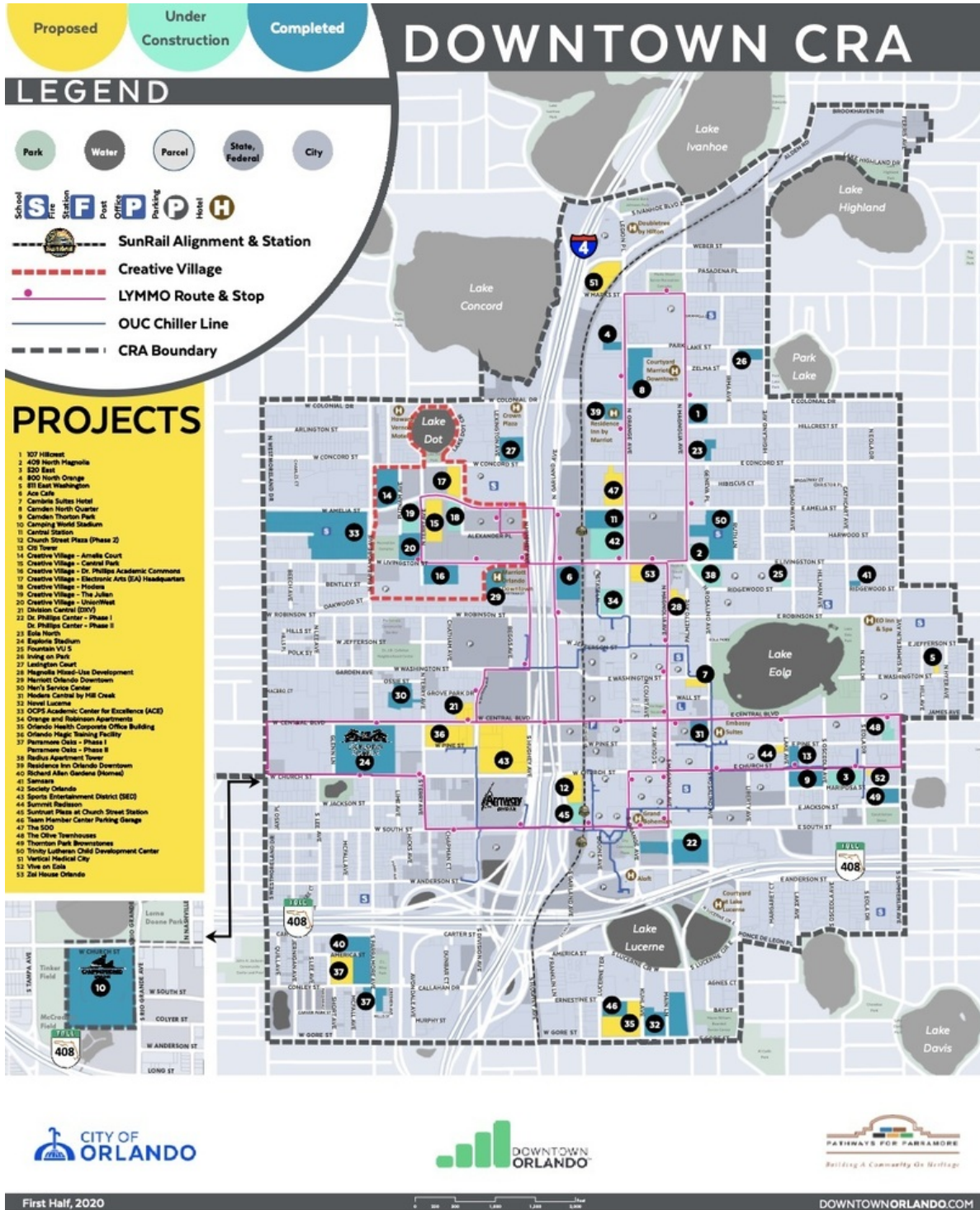
CITY COMMERCIAL
1101 Symonds Ave.
Winter Park, FL 32789
CITYcommercial.com



Proximity Map



Downtown Orlando Projects



Map

