

Free-Standing, Multi-Use Showroom & Warehouse



OFFERING SUMMARY

Sale Price:	\$3,500,000
Lease Rate:	\$25 NNN
Building Size:	8,092 USF
	9,712 GSF

PROPERTY OVERVIEW

High Visibility, Free-Standing, Multi-Use Building
 Situated between Winter Garden & Clermont, close to Turnpike
 Over 200' of Highway 50 frontage
 C-1 Zoning (City of Oakland). Quickly growing market.
 Huge land - mostly paved ± 2.75 acres
 Approx 100 parking spaces

PROPERTY HIGHLIGHTS

- Classic Florida cracker style with metal roof
- Showroom, Offices, Service & Storage Areas
- Pedestal monument signage
- 12' tall secured fence storage area
- Bonus ±1,600 SF of A/C warehouse with roll-up door, not incl in rentable SF
- Fire sprinklered
- Over 31K VPD traffic count

LEE ZERIVITZ, SIOR, CCIM
 Managing Partner
 407.644.CITY
 lee@citycommercial.com

CITY COMMERCIAL
 1101 Symonds Ave.
 Winter Park, FL 32789
 CITYCommercial.com



FOR SALE OR LEASE

16123 W. COLONIAL DR. | OAKLAND, FL 34787

Photos



LEE ZERIVITZ, SIOR, CCIM
Managing Partner
407.644.CITY
lee@citycommercial.com

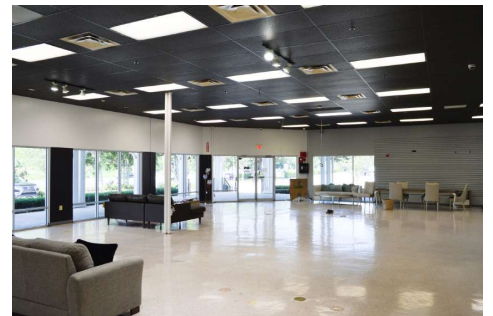
CITY COMMERCIAL
1101 Symonds Ave.
Winter Park, FL 32789
CITYCommercial.com



FOR SALE OR LEASE

16123 W. COLONIAL DR. | OAKLAND, FL 34787

Photos



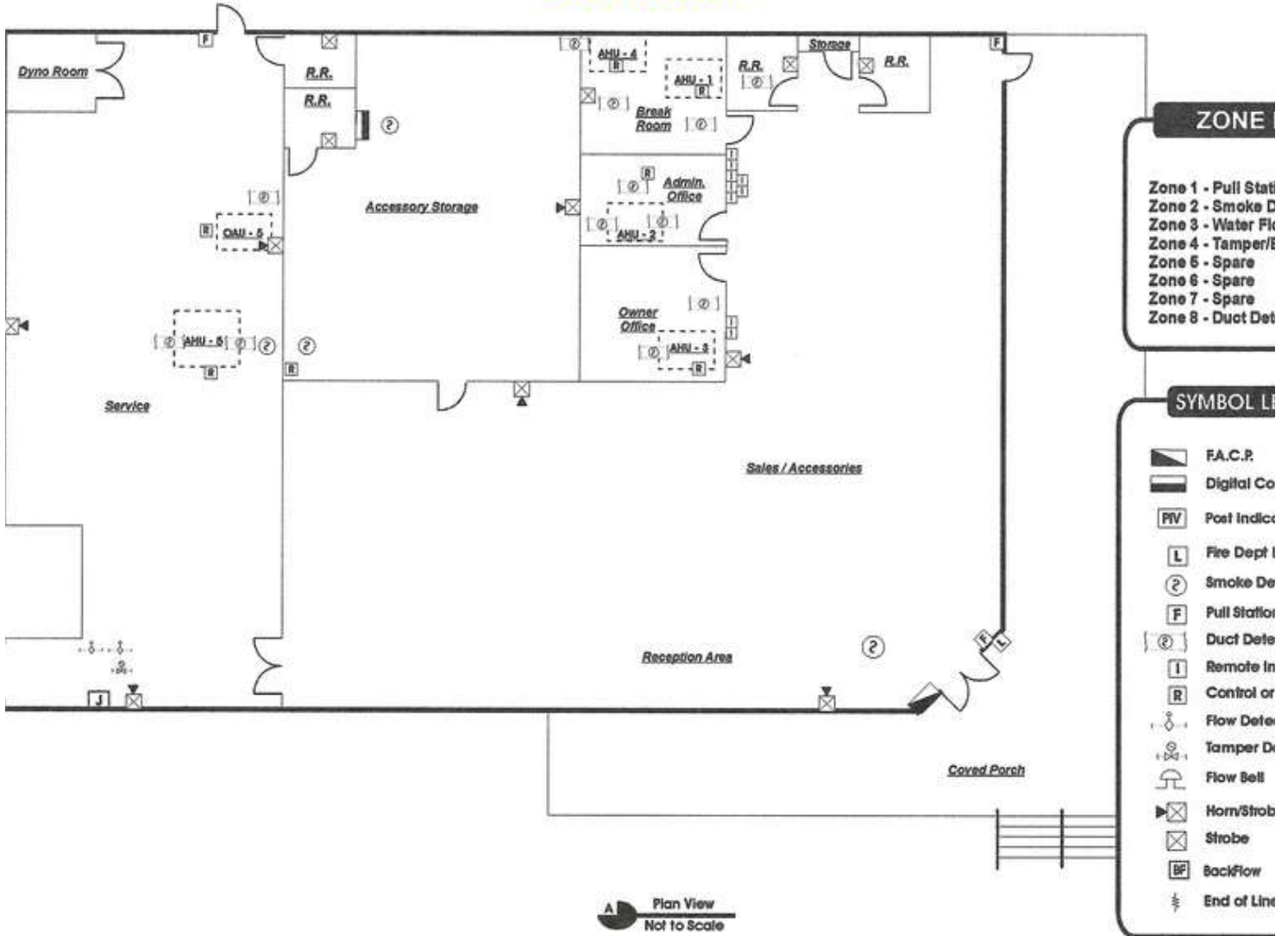
LEE ZERIVITZ, SIOR, CCIM
Managing Partner
407.644.CITY
lee@citycommercial.com

CITY COMMERCIAL
1101 Symonds Ave.
Winter Park, FL 32789
CITYCommercial.com



Space Plan

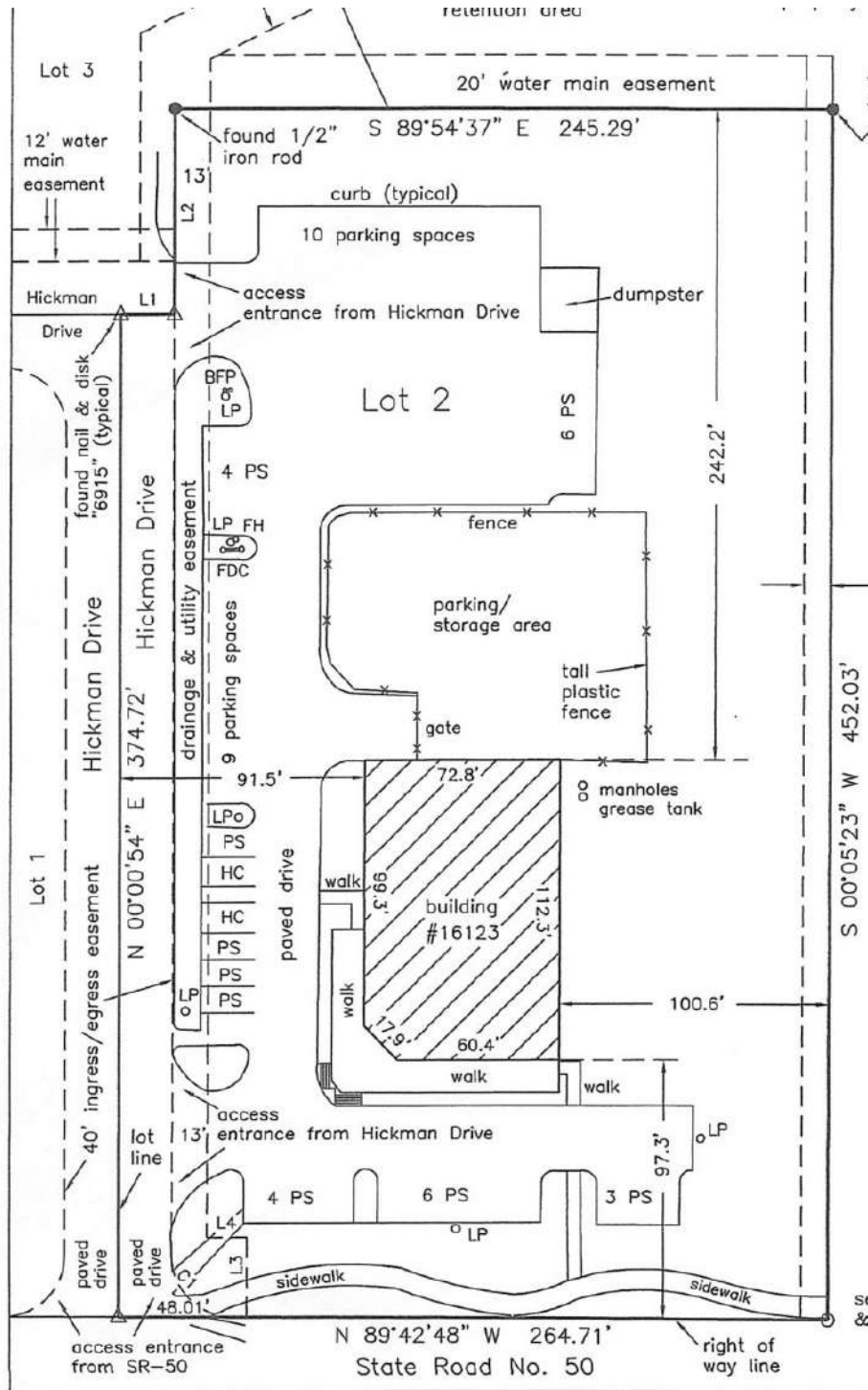
16123 W COLONIAL DRIVE
SHOWROOM



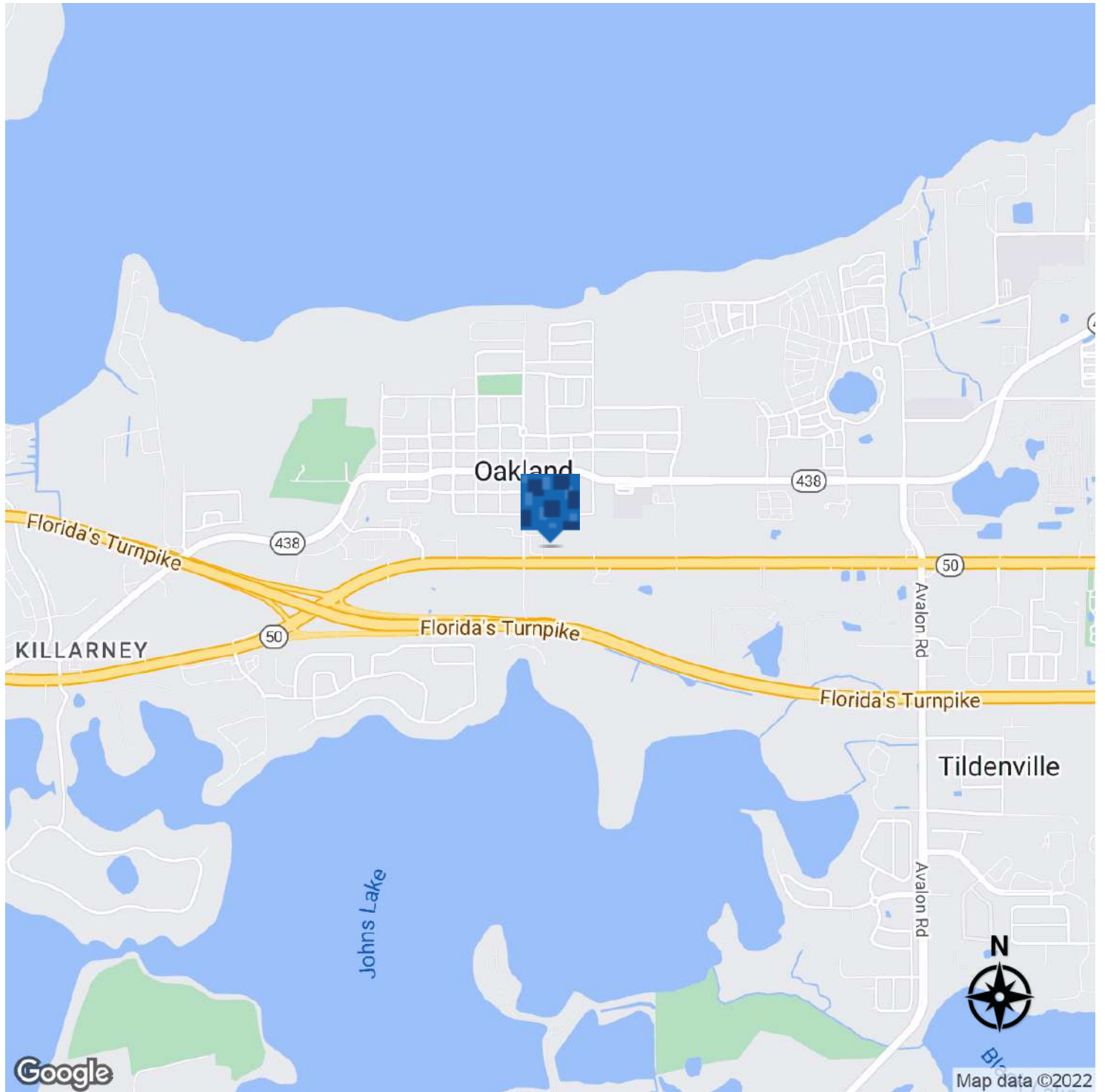
Aerials



Survey



Location Map



LEE ZERIVITZ, SIOR, CCIM
Managing Partner
407.644.CITY
lee@citycommercial.com

CITY COMMERCIAL
1101 Symonds Ave.
Winter Park, FL 32789
CITYCommercial.com

