

Prime Maitland Professional Office



OFFERING SUMMARY

Lease Rate:	Negotiable
Suite SF:	± 2,551

PROPERTY OVERVIEW

Prime Maitland Center Office
Easy access off I-4 / Maitland Blvd / Sandspur

PROPERTY HIGHLIGHTS

- ± 2,551 SF
- Suite 270. Privately owned.
- Easy in/out for on the go staff.
- Professional offices (former law office)
- First-class finishes throughout
- Highly functional space plan
- 3 reserved parking spaces plus staff parking
- Separate private executive entrance

LEE ZERIVITZ, SIOR, CCIM
Managing Partner
407.644.CITY
lee@citycommercial.com

CITY COMMERCIAL
1101 Symonds Ave.
Winter Park, FL 32789
CITYcommercial.com



FOR LEASE

620 N. WYMORE RD. | MAITLAND, FL 32751



LEE ZERIVITZ, SIOR, CCIM
Managing Partner
407.644.CITY
lee@citycommercial.com

CITY COMMERCIAL
1101 Symonds Ave.
Winter Park, FL 32789
CITYcommercial.com



FOR LEASE

620 N. WYMORE RD. | MAITLAND, FL 32751

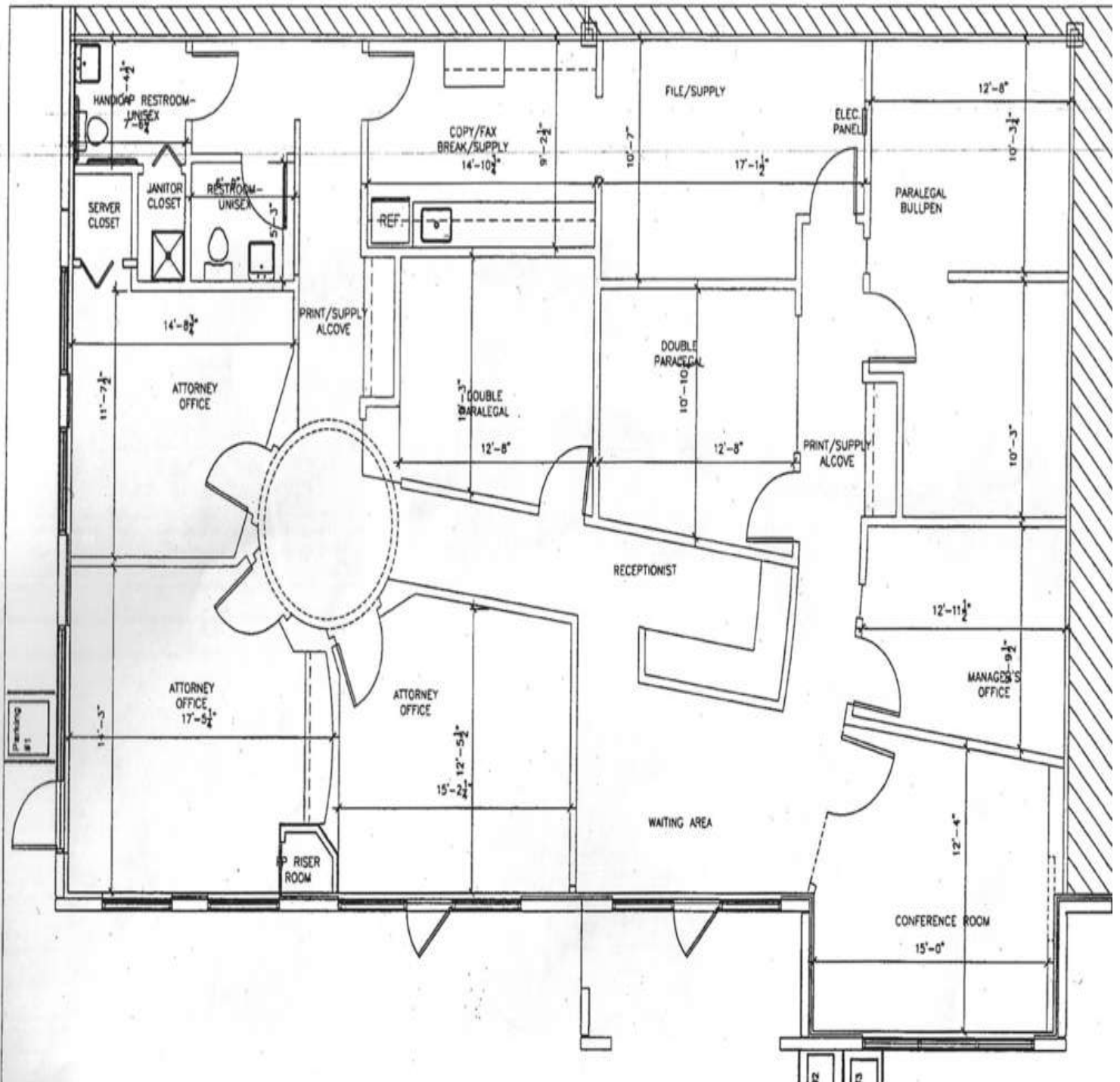


LEE ZERIVITZ, SIOR, CCIM
Managing Partner
407.644.CITY
lee@citycommercial.com

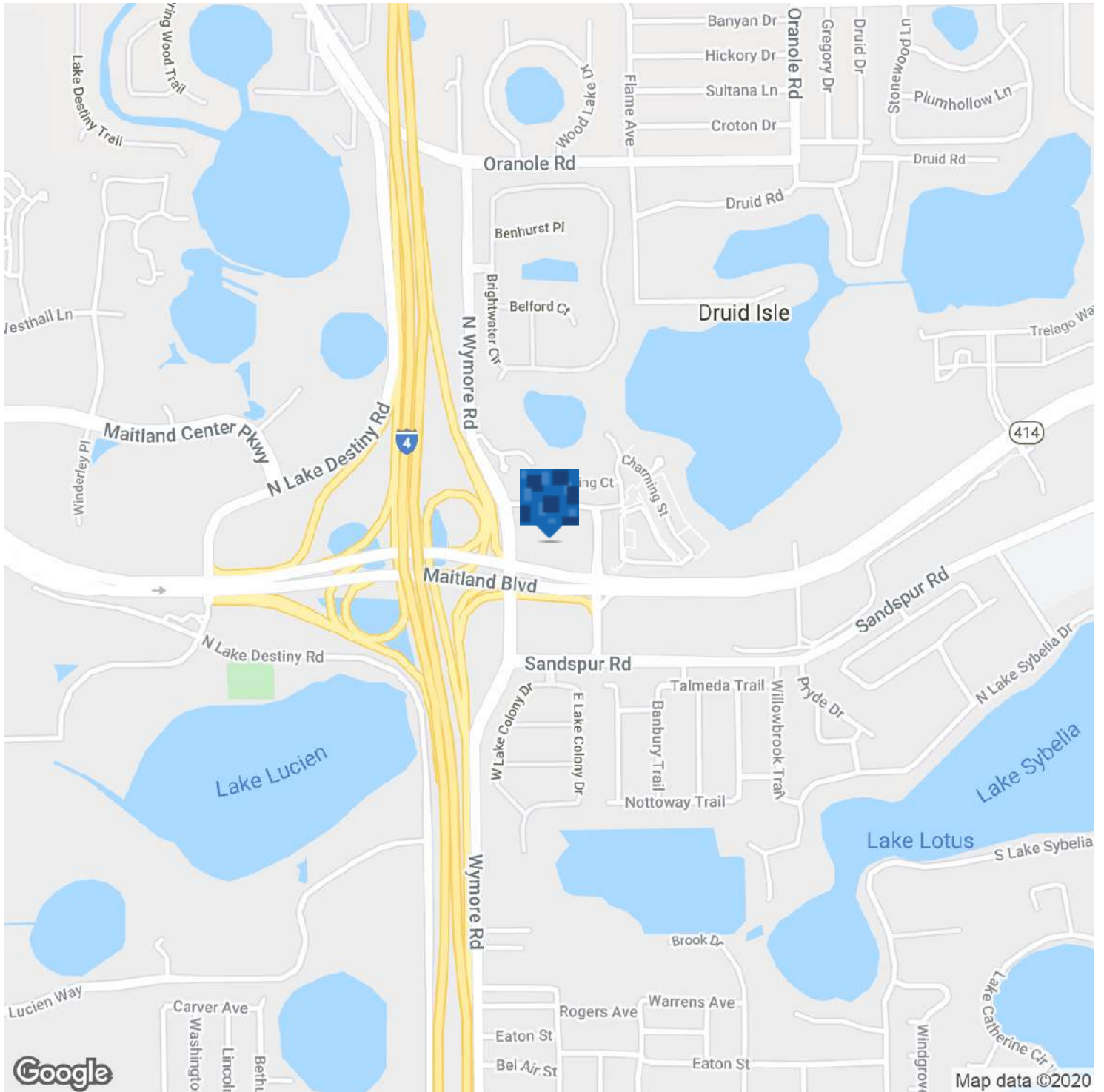
CITY COMMERCIAL
1101 Symonds Ave.
Winter Park, FL 32789
CITYcommercial.com



Space Plan



Location Map



LEE ZERIVITZ, SIOR, CCIM
Managing Partner
407.644.CITY
lee@citycommercial.com

CITY COMMERCIAL
1101 Symonds Ave.
Winter Park, FL 32789
CITYcommercial.com

