

Clermont - Retail/Medical/Special Purpose - 1.89ac Development Land



OFFERING SUMMARY

Sale Price:	Negotiable
Available Land:	1.89 ac
Zoning:	Lake County PD

PROPERTY OVERVIEW

- Four Corners - Clermont
- One of the fastest-growing areas in FL
- Proximity to Theme Parks, Interstate 4, FL Turnpike & Hwy 429
- Directly across from Orlando Health ER & Medical Pavillion
- Just south of Town Center at Cagan Crossings

PROPERTY HIGHLIGHTS

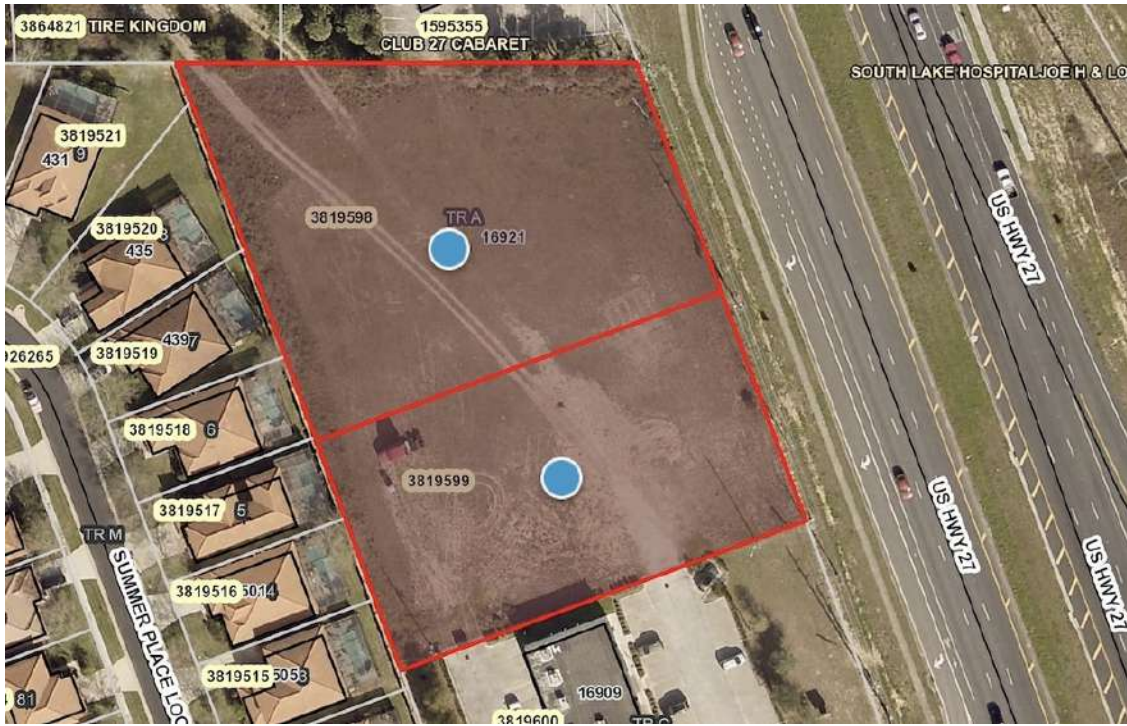
- Retail / Medical / Special Purpose
- Entitlements allow up to 10,000 SF of new construction
- Over 250' of US Hwy 27 frontage
- High & dry land
- Survey & topo available

LEE ZERIVITZ, SIOR, CCIM
Managing Partner
407.644.CITY
lee@citycommercial.com

CITY COMMERCIAL
1101 Symonds Ave.
Winter Park, FL 32789
CITYcommercial.com



2 Lots



OF LOTS - 2 | TOTAL LOT SIZE 1.89 ACRES | -

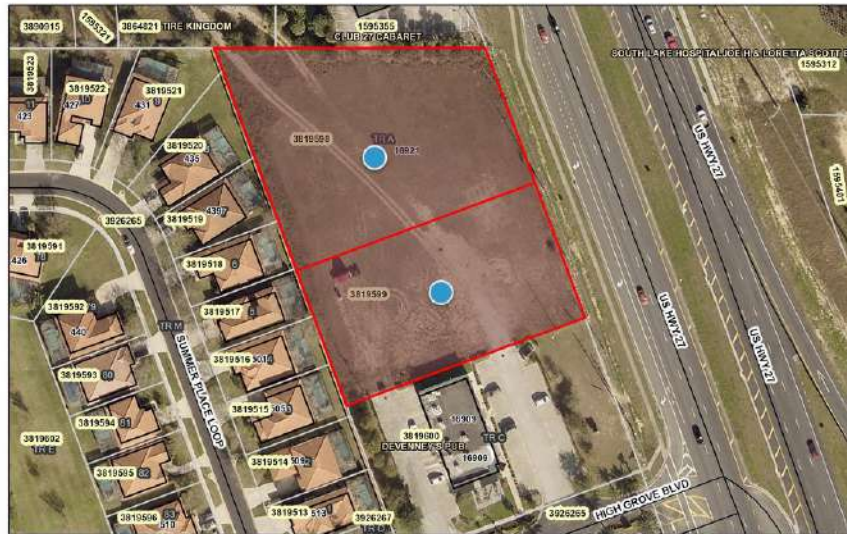
STATUS	LOT #	ADDRESS	APN	SUB-TYPE	SIZE	PRICE	ZONING
Available	35-24-26-0800-00A-00000	16921 HIGH GROVE BLVD CLERMONT, FL 34714		Retail	1.08 Acres	N/A	PD
Available	35-24-26-0800-00B-00000	16915 HIGH GROVE BLVD CLERMONT, FL 34714		Retail	0.81 Acres	N/A	PD



Directional Photos



Parcel Aerials



Retailer Map



FOR SALE

16915 & 16921 HIGH GROVE BLVD. | CLERMONT, FL 34714

Regional Map



LEE ZERIVITZ, SIOR, CCIM
Managing Partner
407.644.CITY
lee@citycommercial.com

CITY COMMERCIAL
1101 Symonds Ave.
Winter Park, FL 32789
CITYcommercial.com

