

Waymont Medical & Office Village



OFFERING SUMMARY

Lease Rate:	**\$15 NNN
Available SF:	3,000 - 6,000

** Y1 leasing special - ask broker for details **

PROPERTY OVERVIEW

Waymont Medical & Office Village Building
Direct Lake Mary Blvd frontage with ±45,000 VPD

2 min drive to both:

- New Orlando Health Campus
- New AdventHealth Medical Park

Close proximity to I-4 & SR 417 exits, Hwy 17/92 & SunRail stops

PROPERTY HIGHLIGHTS

- Two available spaces with full buildout: 3,000 SF each
- All professional co-tenants
- Illuminated marquee signage
- NO core factor provides maximum efficiency and cost savings
- Attractive & well-maintained brick buildings w ample parking
- Nearby shopping & dining

LEE ZERIVITZ, SIOR, CCIM
Managing Partner
407.644.CITY
lee@citycommercial.com

CITY COMMERCIAL
1101 Symonds Ave.
Winter Park, FL 32789
CITYCommercial.com



FOR LEASE

100 - 200 WAYMONT CT | LAKE MARY, FL 32746

Property Photos

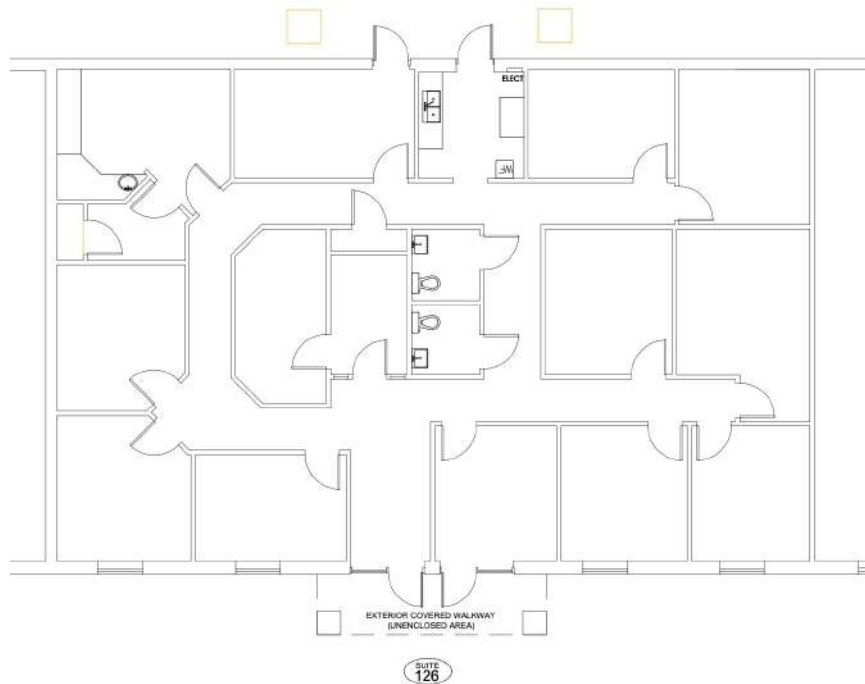
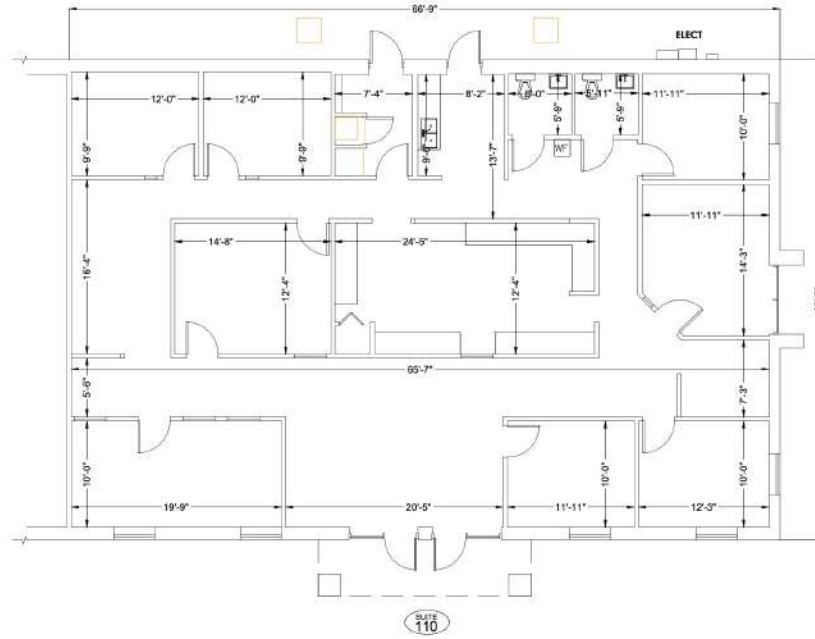


LEE ZERIVITZ, SIOR, CCIM
Managing Partner
407.644.CITY
lee@citycommercial.com

CITY COMMERCIAL
1101 Symonds Ave.
Winter Park, FL 32789
CITYCommercial.com



Space Plans

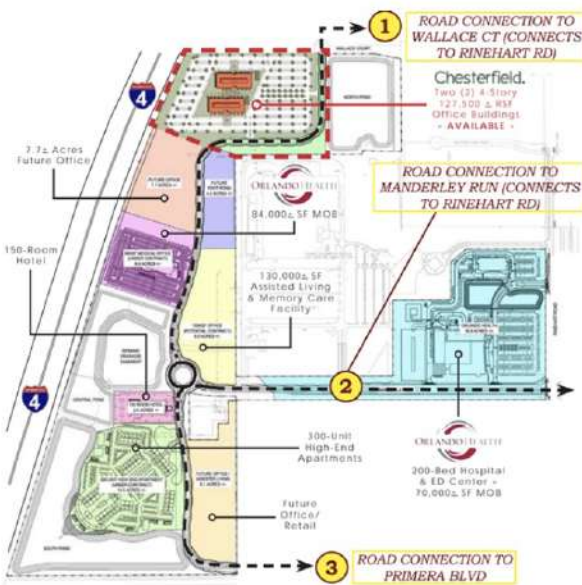


Nearby Orlando Health

ORLANDO HEALTH – LAKE MARY CAMPUS – 1.8 Miles

Opened 2019, Orlando Health's new medical campus in Lake Mary features an emergency room and medical pavilion offering residents convenient access to comprehensive healthcare services. The emergency room is located at 380 Rinehart Rd. and the neighboring medical pavilion is at 392 Rinehart Rd. in Lake Mary, (corner of Rinehart Road and Caring Drive).

The Orlando Health Emergency Room and Medical Pavilion – Lake Mary consists of a two-story, 40,000-square emergency department, provided as a service of Orlando Health South Seminole Hospital, and an adjacent three-story, 60,000-square-foot medical office building.

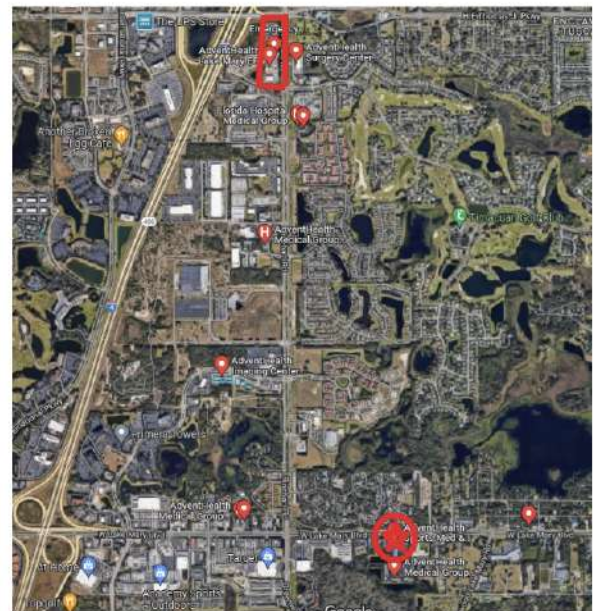


Nearby AdventHealth

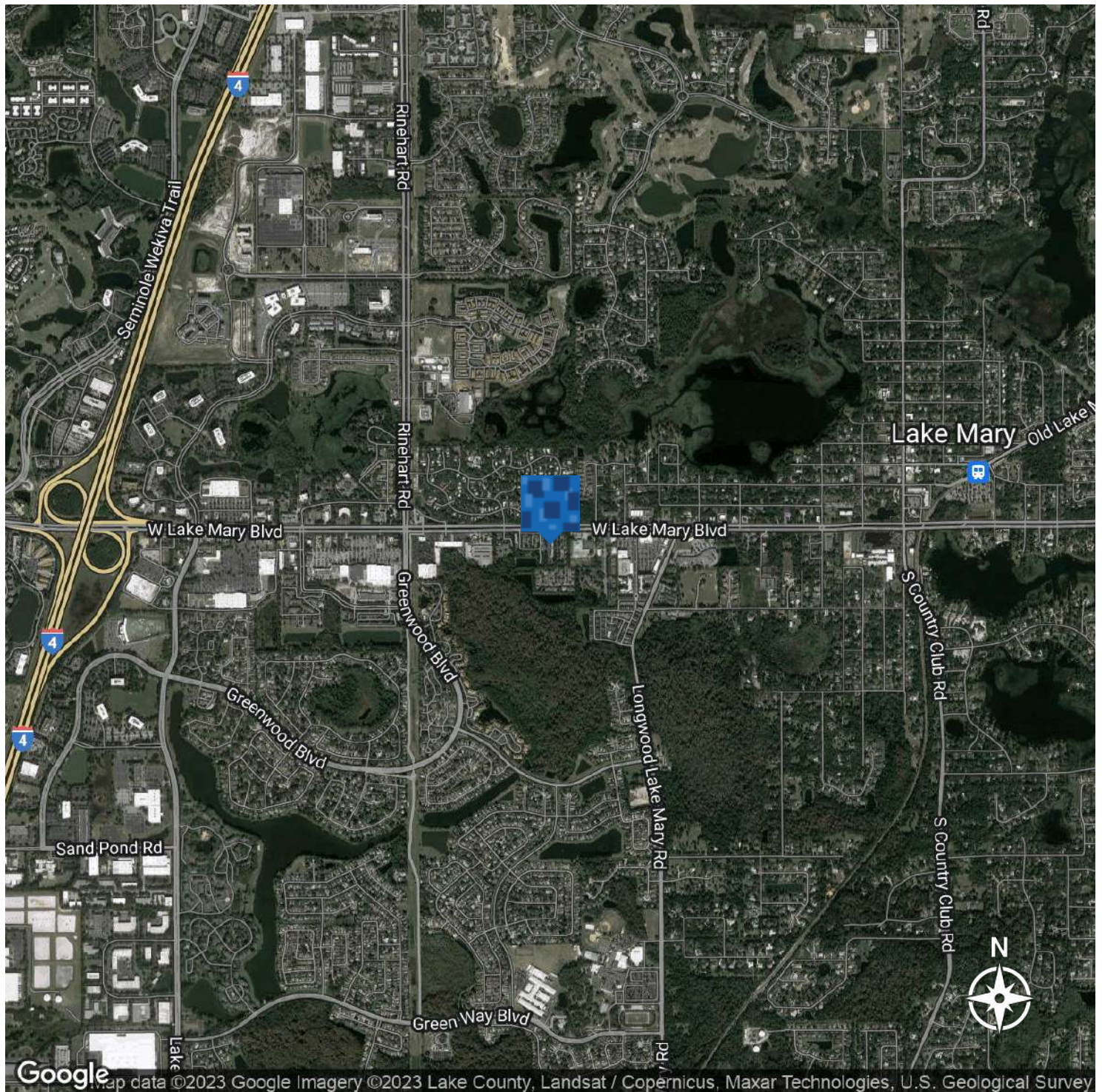
ADVENTHEALTH – LAKE MARY HEALTH PARK – 2.7 Miles

2021 - AdventHealth has broken ground on a state-of-the-art health park that will provide a wide range of specialty services to Lake Mary and Seminole County residents.

Located right next to the AdventHealth Lake Mary ER on Rinehart Road, the three-story, 58,000-square-foot health park will provide services such as gastroenterology, colorectal, electrophysiology and general surgery. Furthermore, the health park will offer lab services, sleep studies, diagnostic medical imaging, sports medicine and rehab, outpatient surgery, and much more. The outpatient surgery center will be located on the third floor where locals will have access to screenings, biopsies and surgical intervention.



Location Map



LEE ZERIVITZ, SIOR, CCIM
Managing Partner
407.644.CITY
lee@citycommercial.com

CITY COMMERCIAL
1101 Symonds Ave.
Winter Park, FL 32789
CITYCommercial.com

