

JYP & Silver Star | Industrial Warehouse | Laydown Yard



OFFERING SUMMARY

Lease Rate:	Negotiable NNN
Total Size:	± 33,100 SF

→ Building 1:

Warehouse	± 25,500
Office	± 3,500
Mezz	± 2,100 concrete deck

→ Building 2:

Warehouse	± 2,000
-----------	---------

Lot Size: ± 2.17 acres

Laydown yard: Paved, half acre +

Zoning: City of Orlando, I-G/W

PROPERTY OVERVIEW:

Located one-half mile north of the booming Packing District
 Hard-to-find stand-alone warehouse in the JYP / Silver Star industrial area
 COLUMN-FREE Steel on block with insulated roof

PROPERTY HIGHLIGHTS:

- 24' clear & 20' eave
- Loading:
 - - Front & side load
 - - 4 dock-high (levelers) with covered / recessed loading bays
 - - 1 concrete ramp-up
 - - Two 24' W x 16' H oversized roll-ups and One 12' W x 12' H roll-up
- 3-phase power, fire sprinklered throughout
- New exterior paint, sealcoat & stripe. Fully fenced.
- Very low operating expenses
- Abundant employee parking. 3 sea containers available.

LEE ZERIVITZ, SIOR, CCIM
 Managing Partner
 407.644.CITY
 lee@citycommercial.com

CITY COMMERCIAL
 1101 Symonds Ave.
 Winter Park, FL 32789
 CITYCommercial.com



FOR LEASE

2705 EUNICE AVENUE | ORLANDO, FL 32808

Building Photos



LEE ZERIVITZ, SIOR, CCIM
Managing Partner
407.644.CITY
lee@citycommercial.com

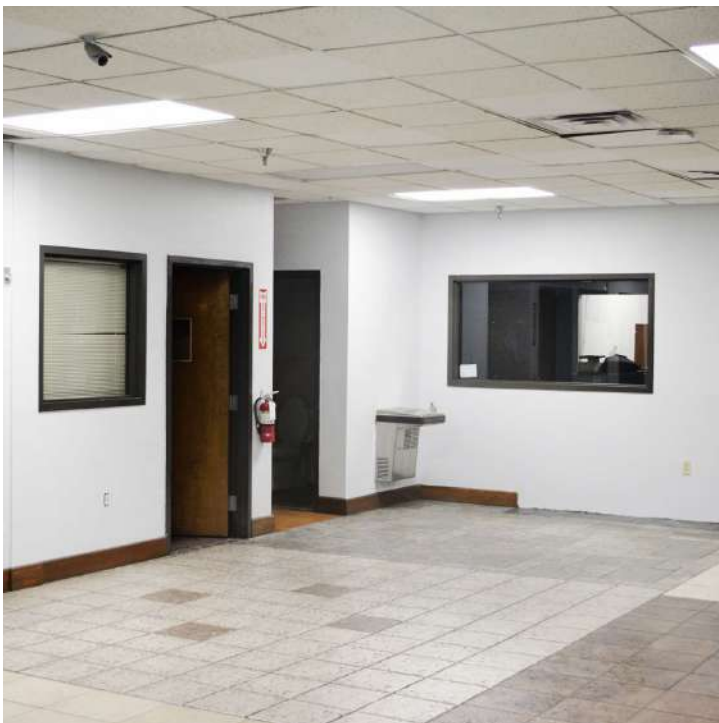
CITY COMMERCIAL
1101 Symonds Ave.
Winter Park, FL 32789
CITYCommercial.com



FOR LEASE

2705 EUNICE AVENUE | ORLANDO, FL 32808

Building Photos



LEE ZERIVITZ, SIOR, CCIM
Managing Partner
407.644.CITY
lee@citycommercial.com

CITY COMMERCIAL
1101 Symonds Ave.
Winter Park, FL 32789
CITYCommercial.com



FOR LEASE

2705 EUNICE AVENUE | ORLANDO, FL 32808

Building Photos

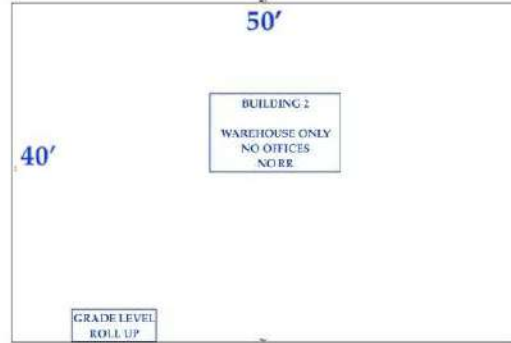
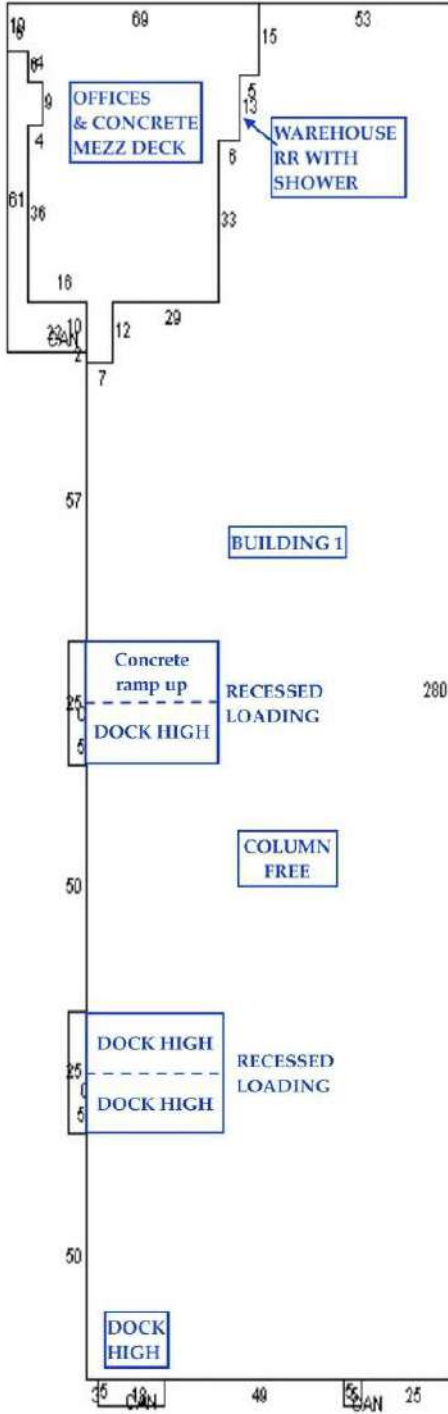


LEE ZERIVITZ, SIOR, CCIM
Managing Partner
407.644.CITY
lee@citycommercial.com

CITY COMMERCIAL
1101 Symonds Ave.
Winter Park, FL 32789
CITYCommercial.com



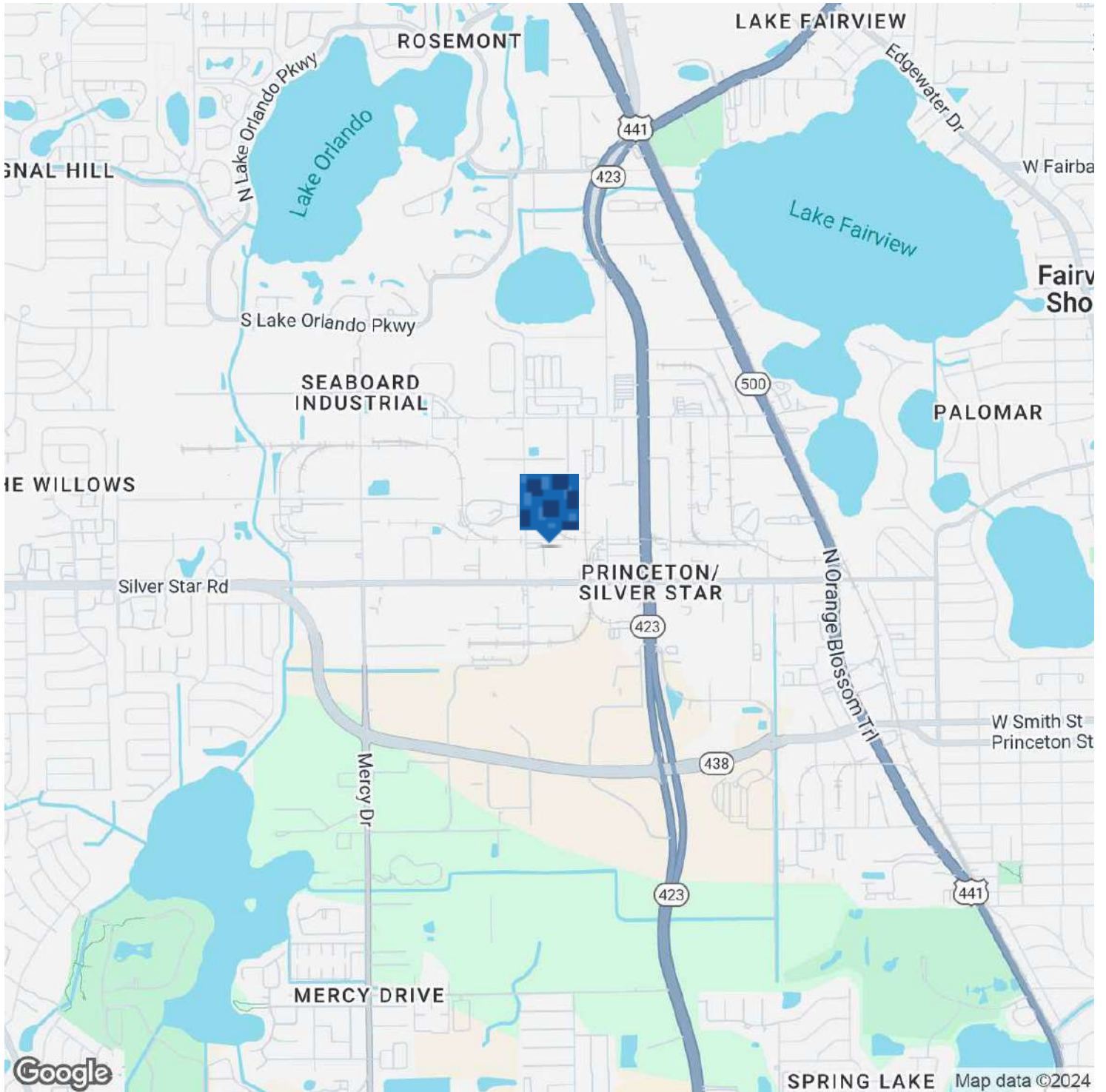
Dimensions



Aerial



Location Map



LEE ZERIVITZ, SIOR, CCIM
Managing Partner
407.644.CITY
lee@citycommercial.com

CITY COMMERCIAL
1101 Symonds Ave.
Winter Park, FL 32789
CITYCommercial.com

