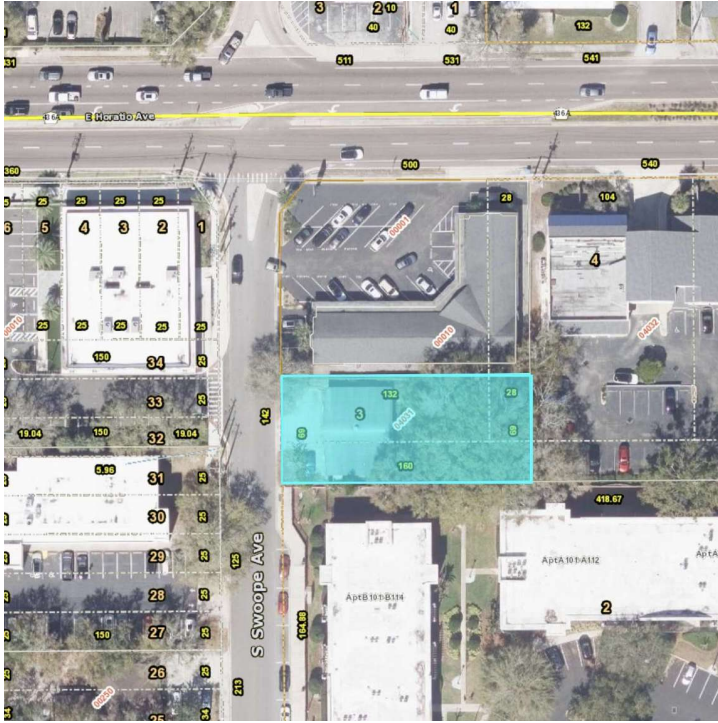


## Downtown Maitland Land



### OFFERING SUMMARY

Asking Sale Price:	\$645,000
Lot Size:	0.25 Acres
<a href="#">Zoning (MTL-DM) Link</a>	Many uses

### PROPERTY OVERVIEW

Rare Maitland land for sale  
 Downtown prime core location in a highly sought-after market  
 New developments underway along Horatio  
 Approx 1,000 brand new multi-fam recently built nearby  
 Easy access to 17/92, Maitland Blvd, and I-4  
 Close to Maitland SunRail Station  
 Strong demos - HH income \$173K

### PROPERTY HIGHLIGHTS

- Site is cleared and ready to build
- Downtown Maitland Zoning (MTL-DM)
- Uses: office, retail, and multi-fam
- Higher Density of .60 FAR is encouraged by City
- Utilities to site
- New survey and clean enviro (2024)

### LEE ZERIVITZ, SIOR, CCIM

Managing Partner  
 407.644.CITY  
[lee@citycommercial.com](mailto:lee@citycommercial.com)

### CITY COMMERCIAL

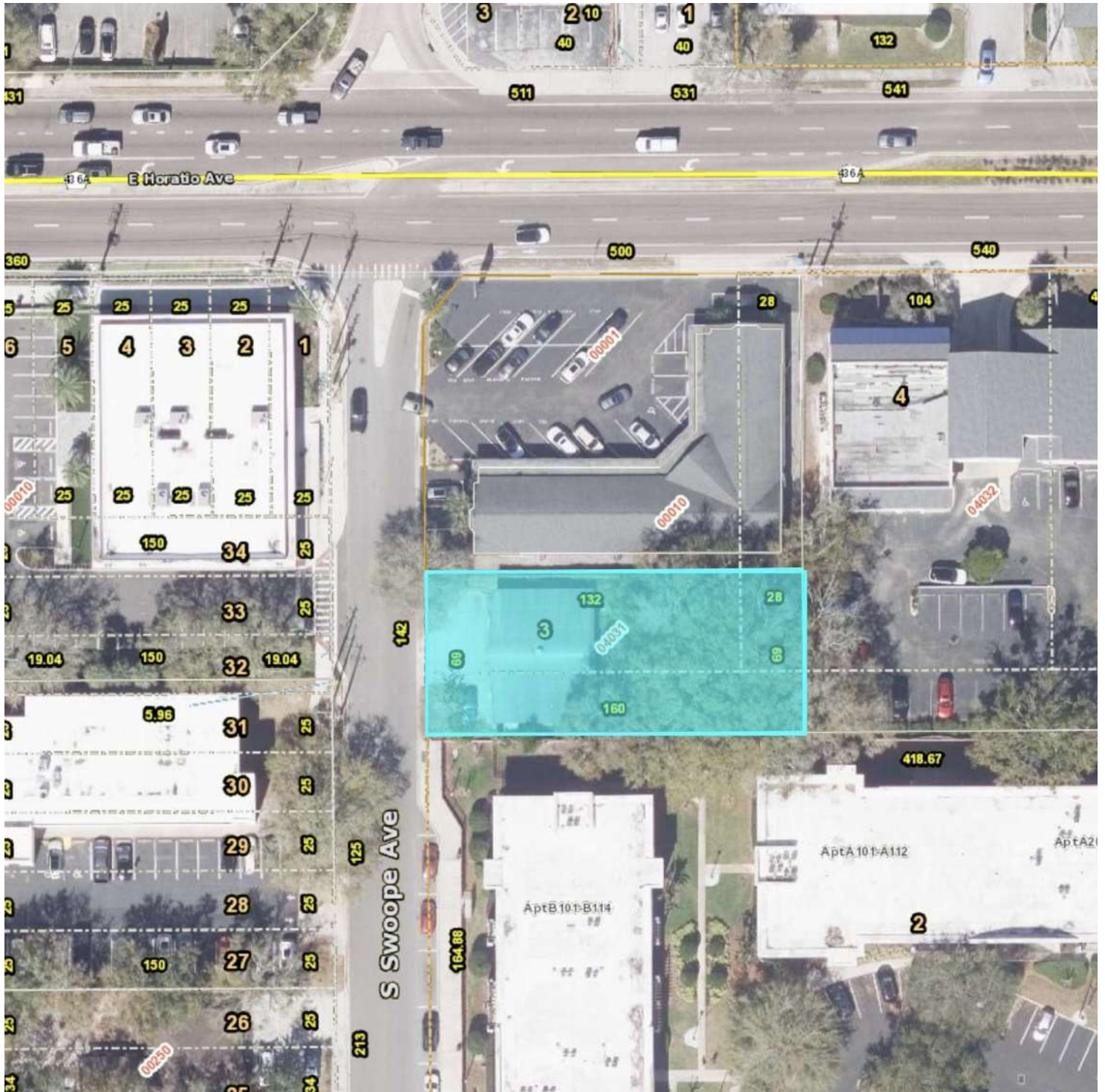
1101 Symonds Ave.  
 Winter Park, FL 32789  
[CITYCommercial.com](http://CITYCommercial.com)



# FOR SALE

**142 S SWOOPE AVE | MAITLAND, FL 32751**

## Aerial



**LEE ZERIVITZ, SIOR, CCIM**  
Managing Partner  
407.644.CITY  
lee@citycommercial.com

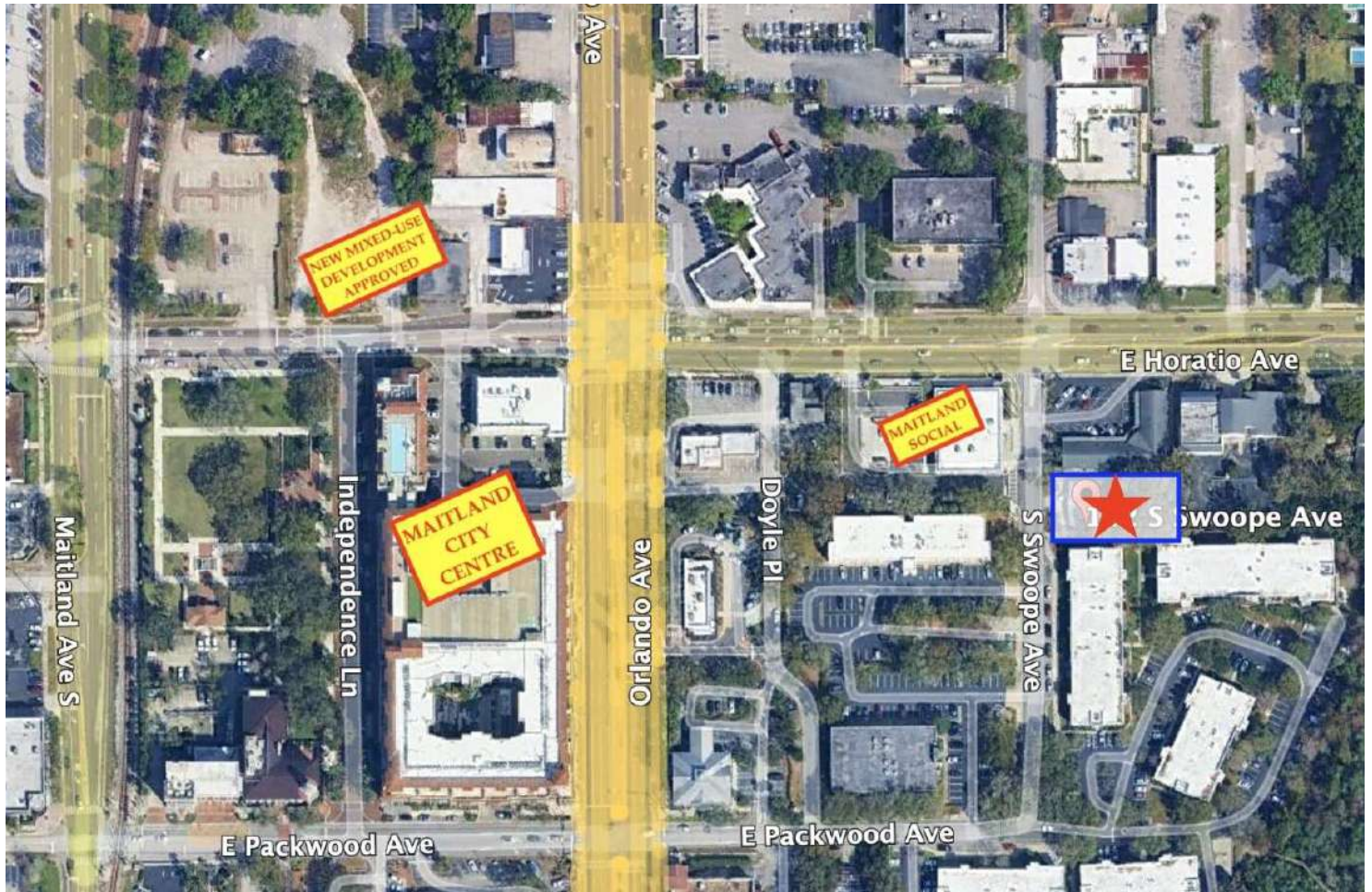
**CITY COMMERCIAL**  
1101 Symonds Ave.  
Winter Park, FL 32789  
CITYCommercial.com



# FOR SALE

142 S SWOOPE AVE | MAITLAND, FL 32751

## Location Map



**LEE ZERIVITZ, SIOR, CCIM**  
Managing Partner  
407.644.CITY  
lee@citycommercial.com

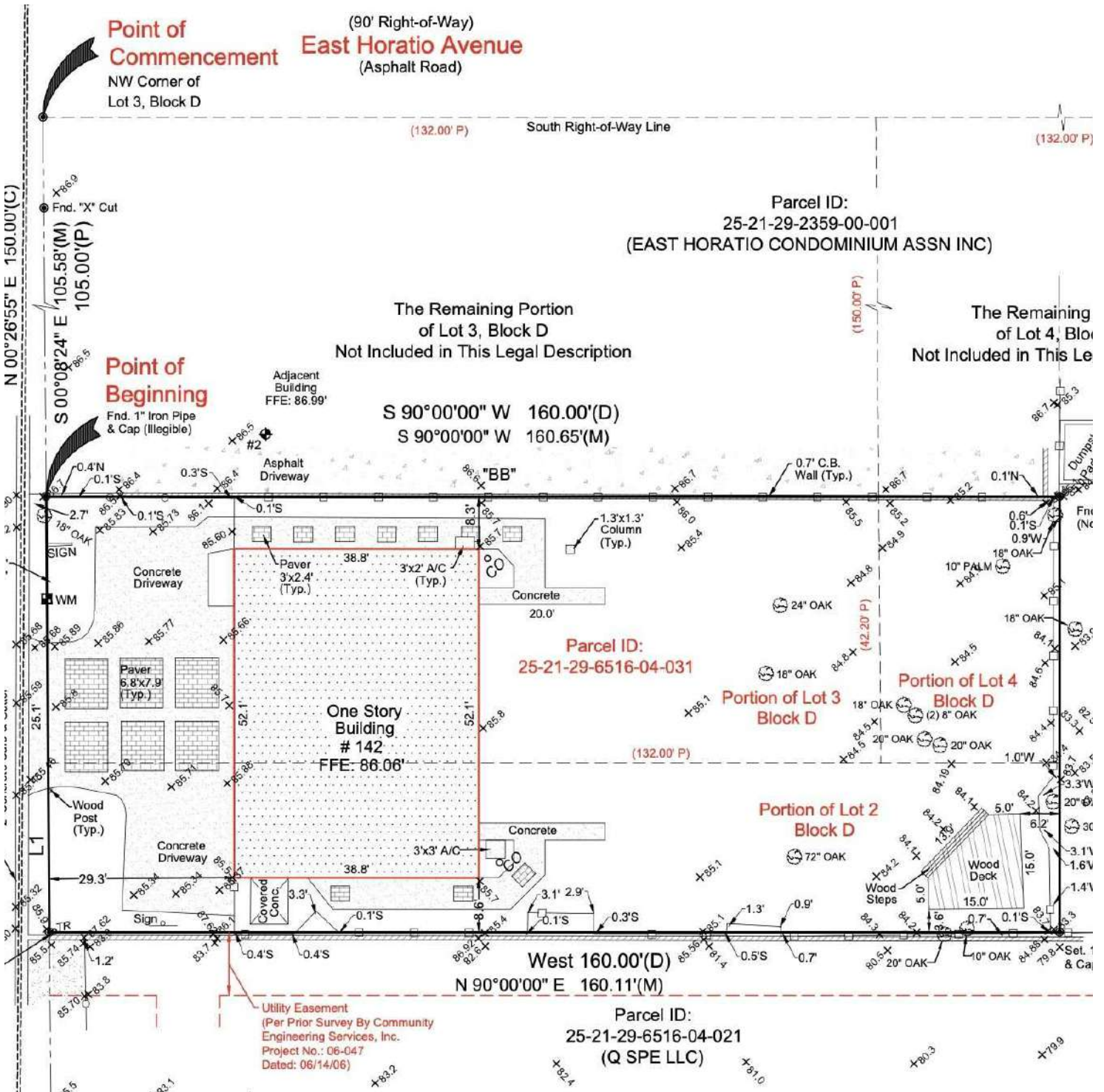
**CITY COMMERCIAL**  
1101 Symonds Ave.  
Winter Park, FL 32789  
CITYCommercial.com



# FOR SALE

**142 S SWOOPE AVE | MAITLAND, FL 32751**

## Survey



**LEE ZERIVITZ, SIOR, CCIM**  
Managing Partner  
407.644.CITY  
lee@citycommercial.com

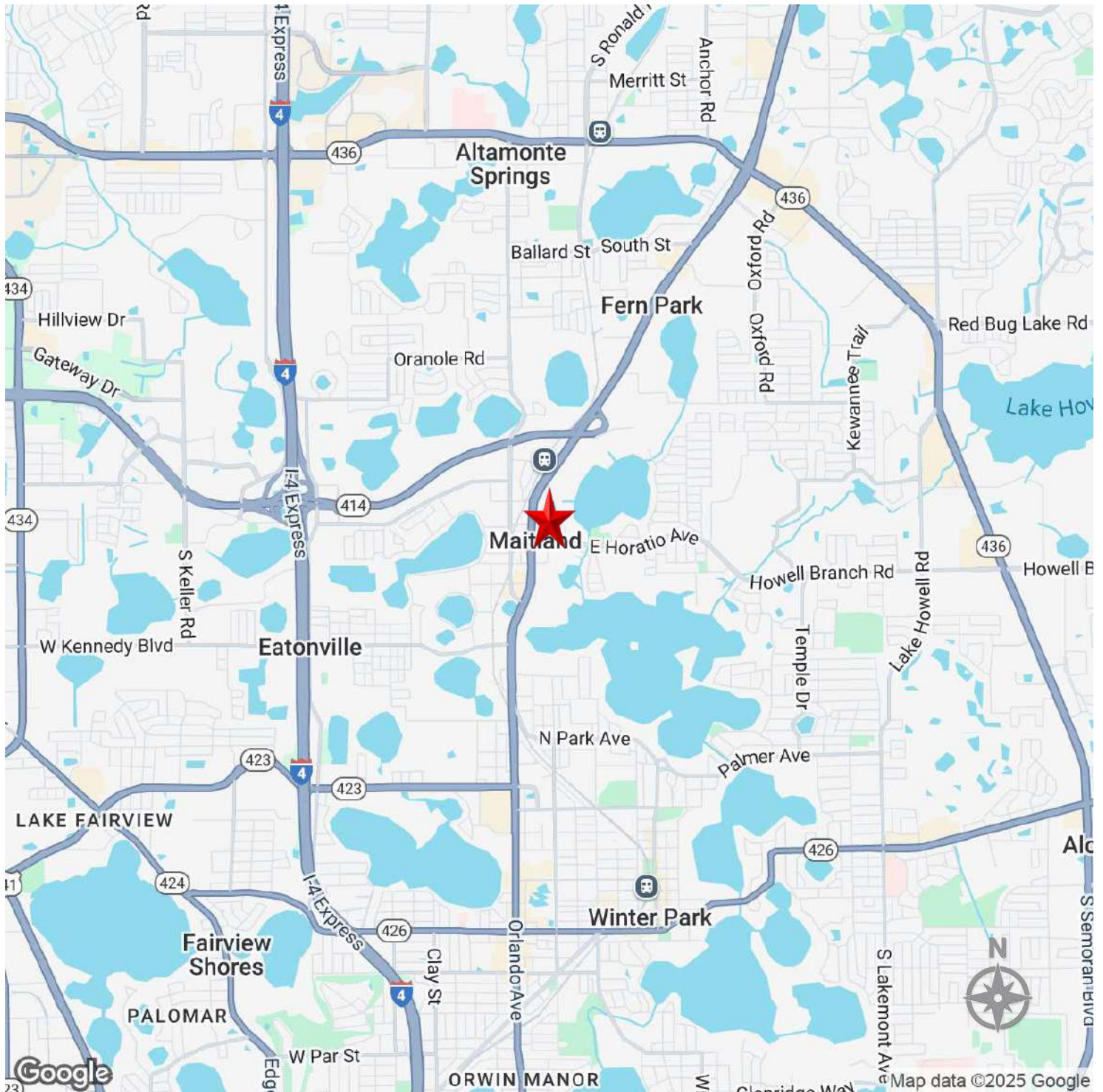
**CITY COMMERCIAL**  
1101 Symonds Ave.  
Winter Park, FL 32789  
CITYCommercial.com



FOR SALE

142 S SWOOPE AVE | MAITLAND, FL 32751

## Map



**LEE ZERIVITZ, SIOR, CCIM**  
Managing Partner  
407.644.CITY  
lee@citycommercial.com

**CITY COMMERCIAL**  
1101 Symonds Ave.  
Winter Park, FL 32789  
CITYCommercial.com

