

MAITLAND
BRAND NEW INDUSTRIAL

FOR LEASE
DELIVERY Q1 2026

TAYLOR INDUSTRIAL COMPLEX

137 ATLANTIC DRIVE, MAITLAND, FL 32751

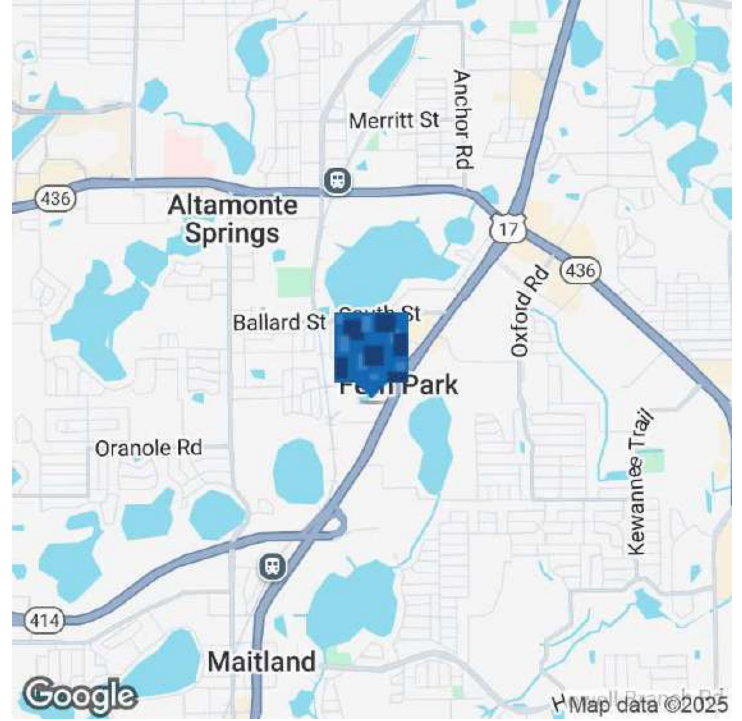


HEIDI ZERIVITZ
M: 407.929.5797
heidi@citycommercial.com

LEE ZERIVITZ, SIOR, CCIM
M: 407.929.3598
lee@citycommercial.com

CITY COMMERCIAL
1101 Symonds Ave.
Winter Park, FL 32789
CITYCommercial.com

Executive Summary



OFFERING SUMMARY

Lease Rate:	Negotiable
Building Size:	± 25,862 SF
Available Suites:	± 2,400 SF and up
Delivery:	Q1 2026

PROPERTY OVERVIEW

Brand New Upscale Maitland Warehouse
Q1 2026 Delivery
Pre-engineered steel on block with multiple SF layout selections
Prime location: 1 mi to Maitland Blvd or HWY 436 and 2.5 mi to I-4
M-1A Industrial Zoning - Sem County

PROPERTY HIGHLIGHTS

- Suites sizes ranging from ± 2,400 SF to full building
- Each suite includes one office & RR with a generous TI package available
- Column-free warehouse
- Clear height 23' / Eave height 20'
- 3-phase power, individually metered
- Fire sprinklered
- One grade-level, roll-up door per suite
- Ample parking & building signage
- Ease of access to all major roads

HEIDI ZERIVITZ
M: 407.929.5797
heidi@citycommercial.com

LEE ZERIVITZ, SIOR, CCIM
M: 407.929.3598
lee@citycommercial.com

CITY COMMERCIAL
1101 Symonds Ave.
Winter Park, FL 32789
CITYCommercial.com



Renderings



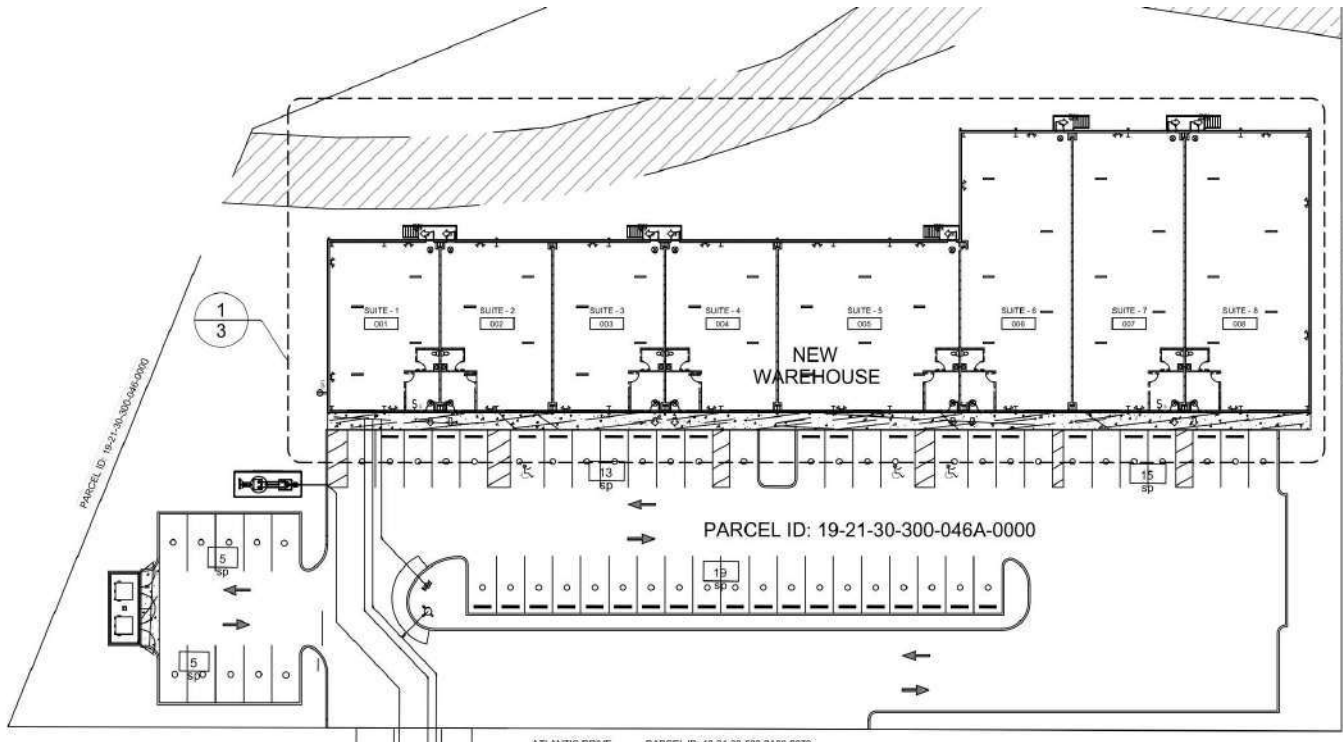
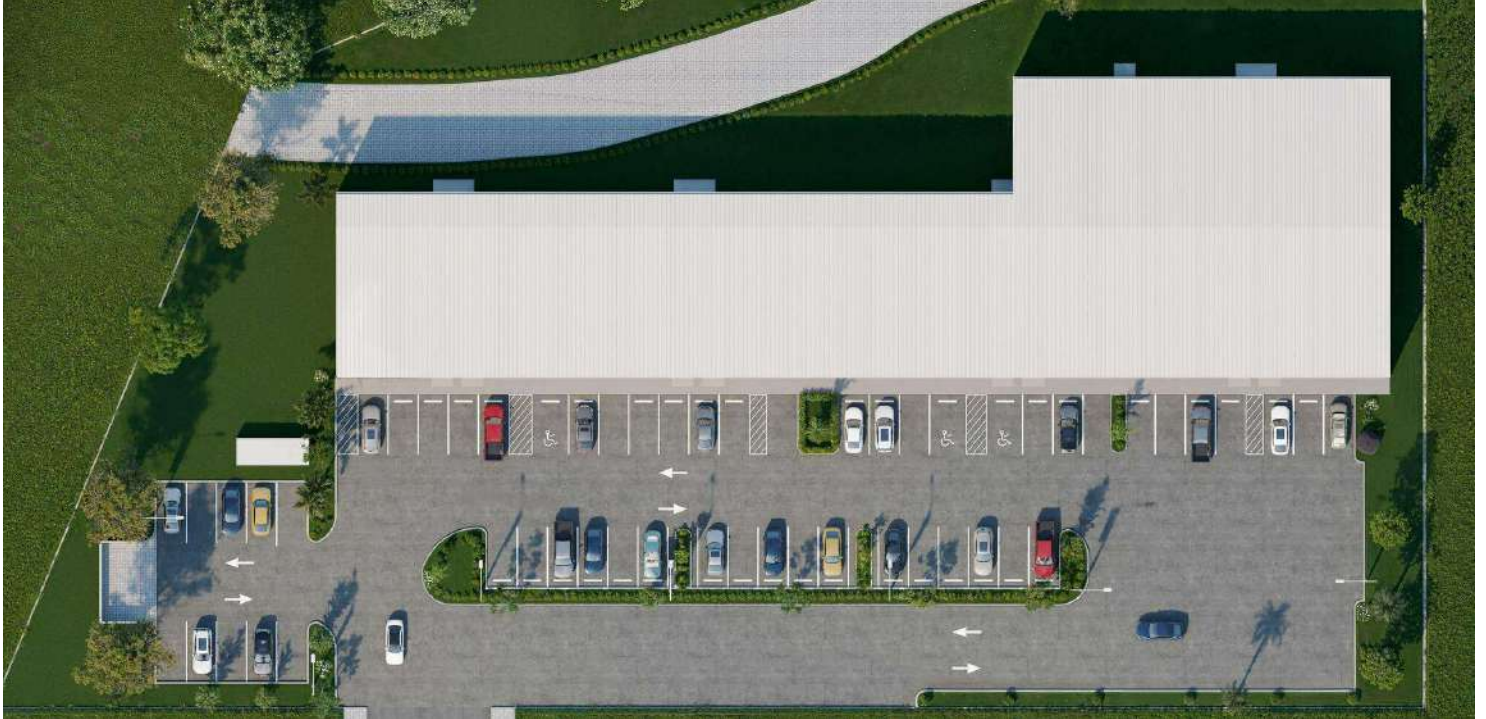
HEIDI ZERIVITZ
M: 407.929.5797
heidi@citycommercial.com

LEE ZERIVITZ, SIOR, CCIM
M: 407.929.3598
lee@citycommercial.com

CITY COMMERCIAL
1101 Symonds Ave.
Winter Park, FL 32789
CITYCommercial.com



Additional Renderings



137 A

HEIDI ZERIVITZ
M: 407.929.5797
heidi@citycommercial.com

LEE ZERIVITZ, SIOR, CCIM
M: 407.929.3598
lee@citycommercial.com

CITY COMMERCIAL
1101 Symonds Ave.
Winter Park, FL 32789
CITYCommercial.com



Map



HEIDI ZERIVITZ
M: 407.929.5797
heidi@citycommercial.com

LEE ZERIVITZ, SIOR, CCIM
M: 407.929.3598
lee@citycommercial.com

CITY COMMERCIAL
1101 Symonds Ave.
Winter Park, FL 32789
CITYCommercial.com

