

WINTER PARK - ORANGE & 17/92 - OFFICE SUBLEASE



OFFERING SUMMARY

Sublease Rate:	\$26.00 Full Service
Available SF:	5,988 SF
Building Size:	23,688 SF

PROPERTY OVERVIEW

Winter Park Office Sublease through Jan 2027
Perfect for professional uses
Intersection of Orange Ave and 17/92
Easy access to all major roads
Prominent monument signage on Orange Ave
Ample parking + one marked reserved at entry

PROPERTY HIGHLIGHTS

- First-floor suite, directly off building entry
- Immaculate condition
- 12 private offices & 14 cubicles
- Conference room - seats 10
- Reception area
- Breakroom
- Most furniture available

LEE ZERIVITZ, SIOR, CCIM
Managing Partner
407.644.CITY
lee@citycommercial.com

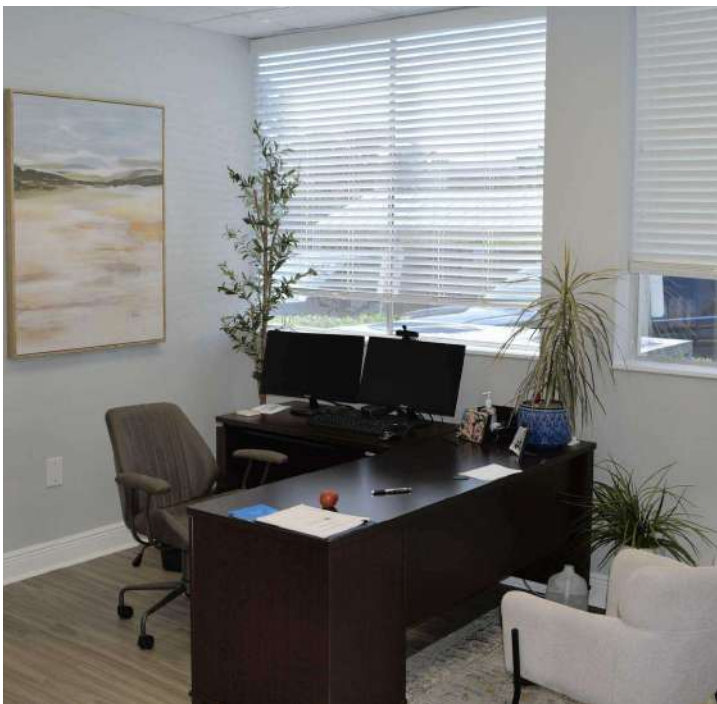
CITY COMMERCIAL
1101 Symonds Ave.
Winter Park, FL 32789
CITYCommercial.com



FOR SUBLEASE

1350 N. ORANGE AVE. | WINTER PARK, FL 32789

Photos



LEE ZERIVITZ, SIOR, CCIM
Managing Partner
407.644.CITY
lee@citycommercial.com

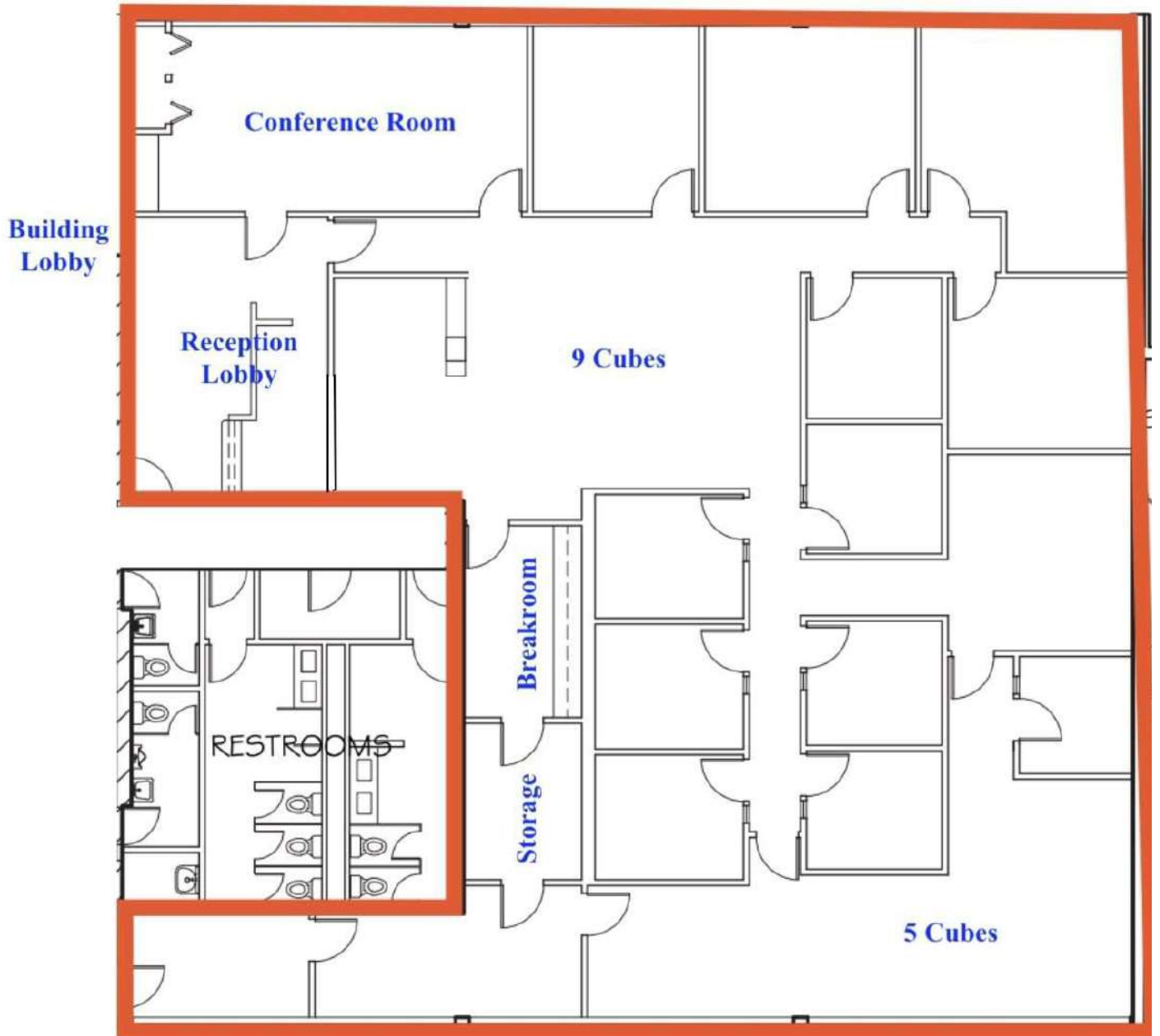
CITY COMMERCIAL
1101 Symonds Ave.
Winter Park, FL 32789
CITYCommercial.com

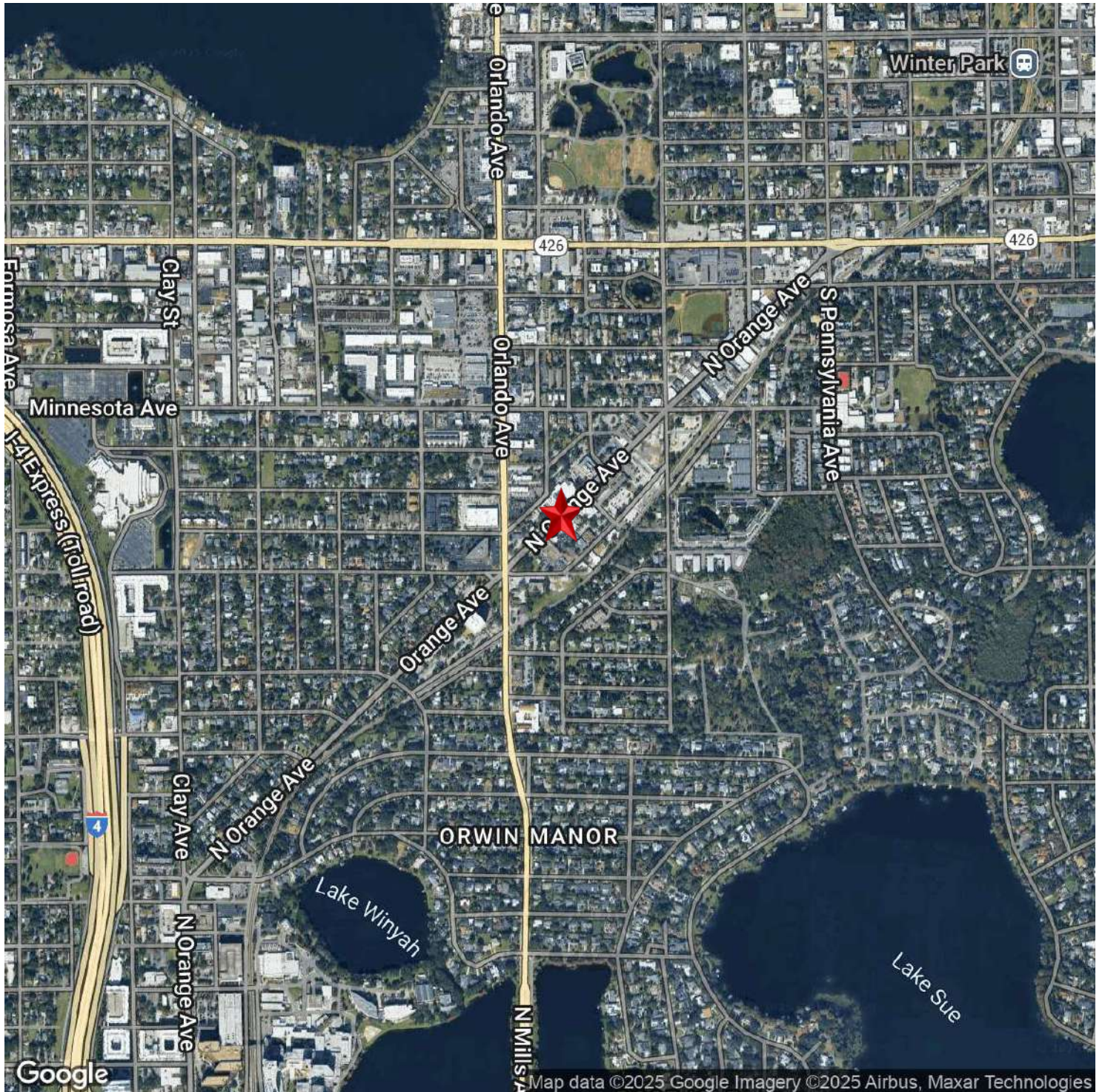


Additional Photos



SPACE PLAN





LEE ZERIVITZ, SIOR, CCIM
Managing Partner
407.644.CITY
lee@citycommercial.com

CITY COMMERCIAL
1101 Symonds Ave.
Winter Park, FL 32789
CITYCommercial.com

